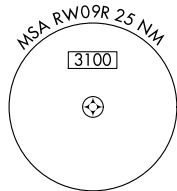
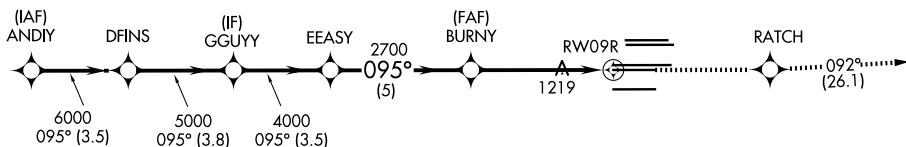


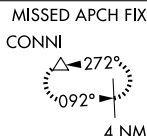
RNAV (GPS) RWY 9R
HARTSFIELD/JACKSON ATLANTA INTL (ATL)

MISSED APPROACH: Climb to 4000 direct RATCH and on track 092° to CONNI and hold.

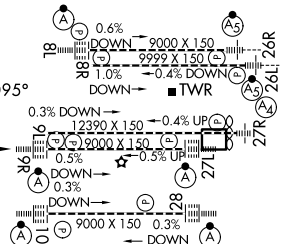
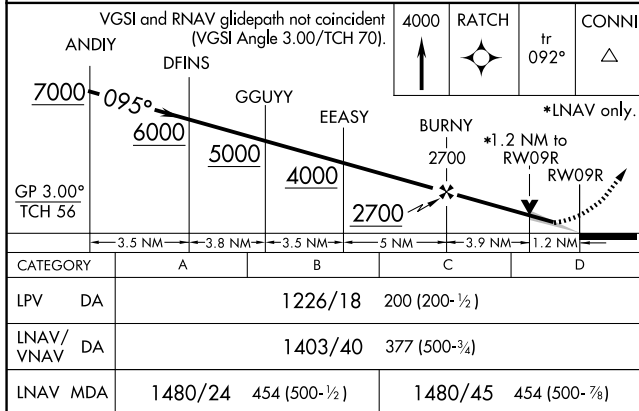
CLNC DEL 118.1	CPDLC
-----------------------------	-------



RADAR REQUIRED



ELEV 1026		TDZE 1026
-----------	---	-----------



HIRL all Rwy's
TDZ/CL Rwy's 8L, 9R, 10, 26R,
27L and 28