

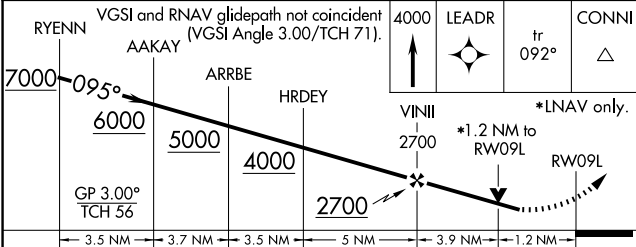
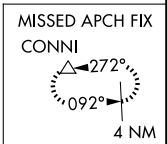
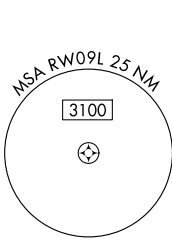
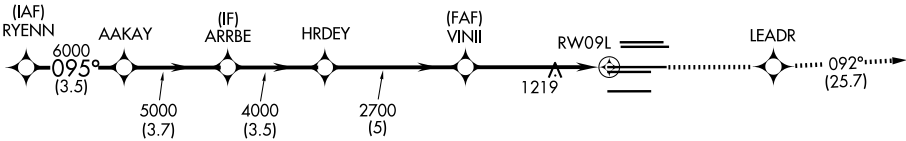
WAAS CH 62800 W09D	APP CRS 095°	Rwy Ldg TDZE 1019 Apt Elev 1026
--	------------------------	---

RNAV (GPS) RWY 9L
HARTSFIELD/JACKSON ATLANTA INTL (ATL)

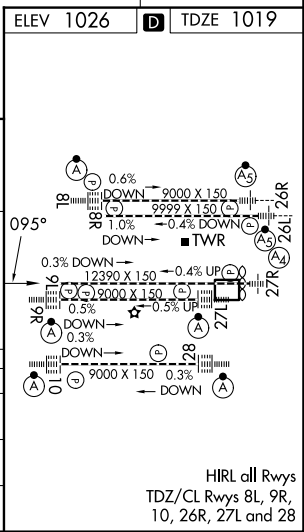
RNP APCH.		For uncompensated Baro-VNAV systems, LNAV/VNAV NA below -7°C or above 54°C. Rwy 9L helicopter visibility reduction below RVR 4000 NA. Simultaneous approach authorized with Rwy 8L or 8R or 10, or Rwy 8L and 10. LNAV procedure NA during simultaneous operations. Use of FD or AP providing RNAV track guidance required during simultaneous operations.		MISSED APPROACH: Climb to 4000 direct LEADR and on track 092° to CONNI and hold.	
-----------	--	--	--	--	--

D-ATIS ARR 119.65 DEP 125.55	ATLANTA APP CON 127.9 379.9	ATLANTA TOWER 8L-26R 8R-26L 9L-27R 9R-27L 10-28 RWYS 119.1 125.325 123.85 119.3 119.5 254.4				ALL RWYS 121.9		GND CON 10-28 RWYS 121.75 121.65 254.4	
--	--	--	--	--	--	-----------------------------	--	---	--

CLNC DEL 118.1	CPDLC
-----------------------------	-------



CATEGORY	A	B	C	D
LPV DA	1359/50		340 (400-1)	
LNAV/VNAV DA	1405/60		386 (400-1¼)	
LNAV MDA	1480/55	461 (500-1)	1480-1¾	461 (500-1¾)



SE-4, 07 AUG 2025 to 04 SEP 2025

SE-4, 07 AUG 2025 to 04 SEP 2025