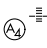
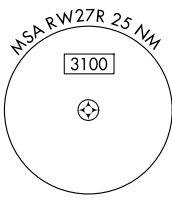
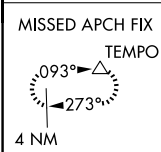
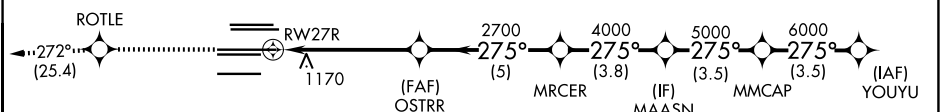


WAAS CH 70400 W27B	APP CRS 275°	Rwy Ldg 11890 TDZE 985 Apt Elev 1026
--	------------------------	---

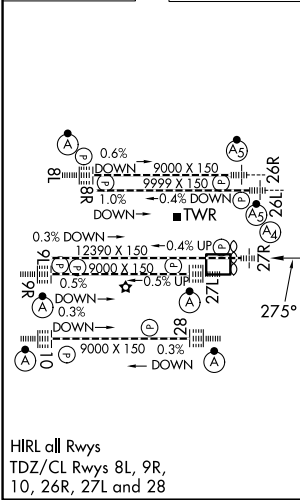
RNAV (GPS) RWY 27R
HARTSFIELD/JACKSON ATLANTA INTL (ATL)

▼ For uncompensated Baro-VNAV systems, LNAV/VNAV NA below -7°C (20°F) or above 54°C (130°F). Simultaneous approach authorized with Rwy 26R or 26L or 28, or Rwy 26R and 28. DME/DME RNP-0.3 NA. For inop MALS, increase LNAV/VNAV Cat D visibility and LNAV Cats C and D visibility ¼ mile. LNAV procedure NA during simultaneous operations. Use of FD or AP providing RNAV track guidance required during simultaneous operations. Inop table does not apply to LPV, all Cats.							MALS 	MISSED APPROACH: Climb to 4000 direct ROTLE and on track 272° to TEMPO and hold.	
D-ATIS ARR 119.65	ATLANTA APP CON	ATLANTA TOWER					ALL RWYS	GND CON	ALL RWYS
DEP 125.55	127.9 379.9	8L-26R	8R-26L	9L-27R	9R-27L	10-28	RWYS (8L-26R,8R-26L) 121.9	(9L-27R,9R-27L) 10-28	RWYS 121.75 121.65 254.4




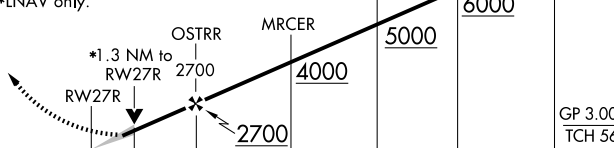
CLNC DEL	CPDLC
118.1	



ELEV 1026	D	TDZE 985
-----------	----------	----------



RADAR REQUIRED

4000	ROTLE	tr 272°	TEMPO	VGSI and RNAV glidepath not coincident (VGSI Angle 3.00/TCH 72).				
				YOUYU 7000				
*LNAV only.								
								
CATEGORY		A		B		C		D
LPV	DA	1185/40		200 (200-¾)				
LNAV/ VNAV	DA	1461-1⅓		476 (500-1⅓)				
LNAV MDA		1460/40		475 (500-¾)		1460/60		475 (500-1¼)