

ATLANTA, GEORGIA

AL-26 (FAA)

25219

WAAS CH 56300 W26A	APP CRS 275°	Rwy Ldg 9999 TDZE 996 Apt Elev 1026
----------------------------------------	------------------------	----------------------------------------------------------------

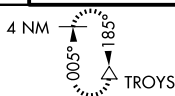
RNAV (GPS) RWY 26L
HARTSFIELD/JACKSON ATLANTA INTL (ATL)

T For uncompensated Baro-VNAV systems, LNAV/VNAV NA below -7°C (20°F) or above 54°C (130°F). DME/DME RNP-0.3 NA. For rnp MALSR, increase LPV all Cts visibility to RVR 4500, LNAV/VNAV all Cts visibility to RVR 6000. Simultaneous approach authorized with Rwy 27L or 27R or 28. LNAV procedure NA during simultaneous operations. Use of FD or AP providing RNAV track guidance required during simultaneous operations.

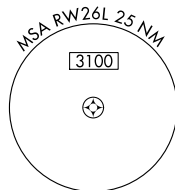
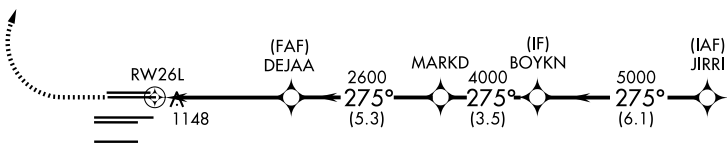
MALSR

MISSED APPROACH:
Climb to 1500 then
climbing right turn to
3500 direct TROYS
and hold.

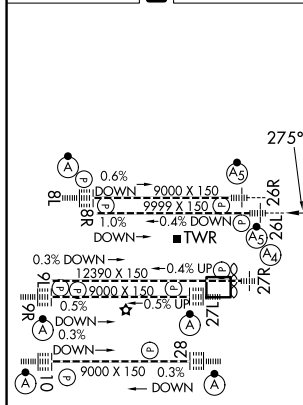
D-ATIS	ATLANTA	ATLANTA TOWER					ALL	GND CON			ALL
ARR	APP CON	8L-26R	8R-26L	9L-27R	9R-27L	10-28	RWYS	(8L-26R,8R-26L)	(9L-27R,9R-27L)	10-28	RWYS
119.65											
125.55	127.9	119.1	125.325	123.85	119.3	119.5	254.4	121.9	121.75	121.65	254.4



CLNC DEL 118.1	CPDLC
-----------------------------	-------

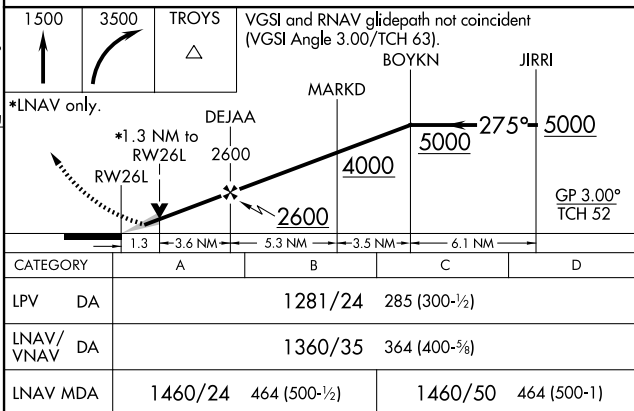


ELEV 1026	D	TDZE 996
-----------	----------	----------



HIRL all Rwy's
TDZ/CL Rwy's 8L, 9R, 10, 26R,
27L and 28

RADAR REQUIRED



ATLANTA, GEORGIA
Amdt 4 18SEP14

33°38'N-84°26'W

HARTSFIELD/JACKSON ATLANTA INTL (ATL)
RNAV (GPS) RWY 26L

SE-4, 07 AUG 2025 to 04 SEP 2025

SE-4, 07 AUG 2025 to 04 SEP 2025