

## ATLANTA, GEORGIA

NOTE: Chart not to scale.

(CONTINUED ON FOLLOWING PAGES)

SE-4, 07 AUG 2025 to 04 SEP 2025

D-ATIS ARR  
119.65  
ATLANTA ARR  
128.525 37

DGESS TRANSITION (DGESS\_OZZZ11): For GSP  
 departures or assigned by ATC only.  
 FLASK TRANSITION (FLASK\_OZZZ11)  
 LEAVI TRANSITION (LEAVI\_OZZZ11)  
 WMHONY TRANSITION (WMHONY\_OZZZ11): For A  
 departures or assigned by ATC only.  
 WINING TRANSITION (WINING\_OZZZ11)

NOTE: RADAR required.

NOTE: RNAV 1.

NOTE: DME/DME/IRU or GPS required.

**NOTE:** Turbojet aircraft only.

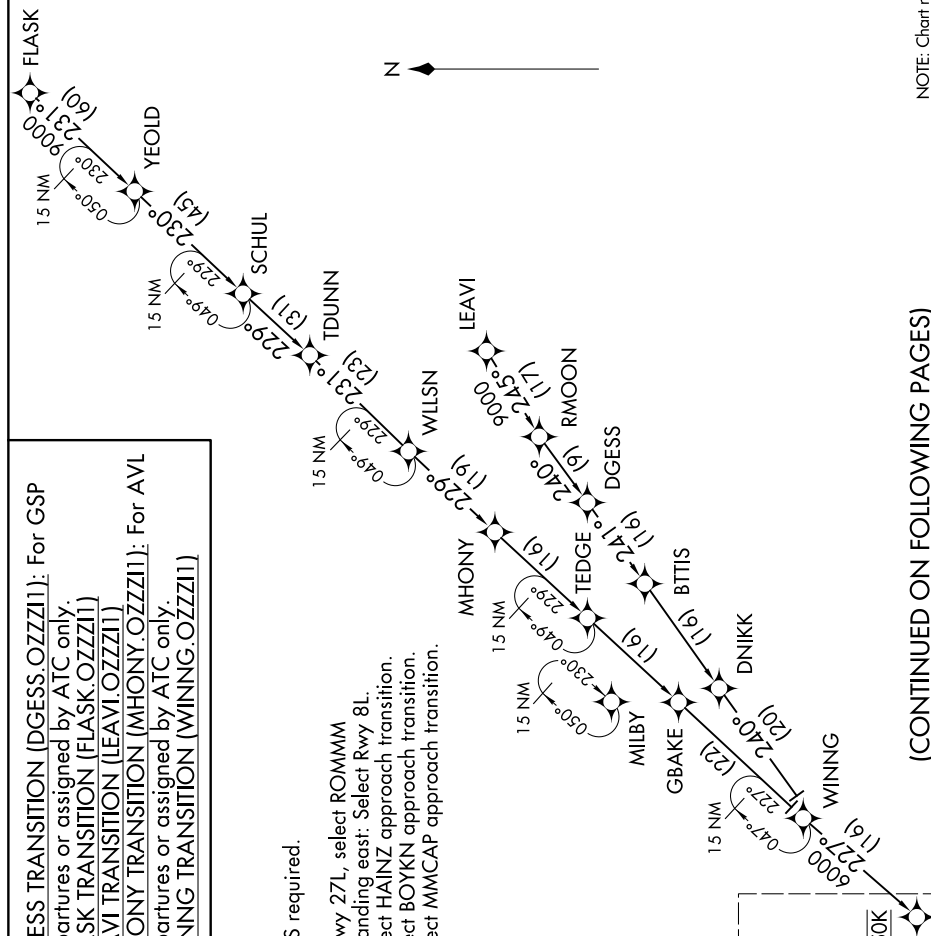
NOTE: Landing west: Select Rwy 27L, select ROMMM

approach transition; Landing east: Select Rwy 8L.

NOTE: Landing Rwy 26R: Select HAINZ approach transition.

NOTE: Landing Rwy 26L: Select BOYKN approach transition.

NOTE: Landing Rwy 27R: Select MMCAP approach transition.



See following page  
for Arrival Routes.

IZZIO

Landing East: Expect 14000

Landing West: Expect 12000 and 250K