

ILS PRM RWY 9R (SA CAT I)  
(CLOSE PARALLEL)

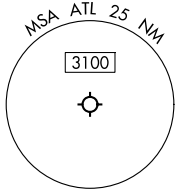
HARTSFIELD/JACKSON ATLANTA INTL (ATL)

LOC/DME I-FUN <b>108.9</b> Chan <b>26</b>	APP CRS <b>095°</b>	Rwy Ldg TDZE Apt Elev	<b>9000</b> <b>1026</b> <b>1026</b>
---	------------------------	-----------------------------	---

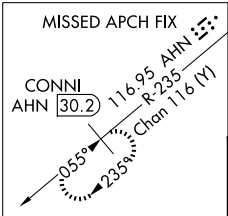
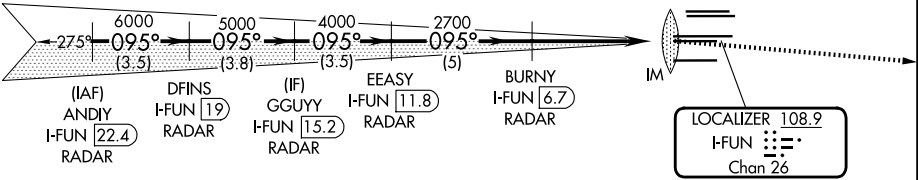
RADAR required for procedure entry, DME.  
Requires specific OPSPEC, MSPEC, or LOA approval.  
Simultaneous approach authorized. Use of FD or AP required during simultaneous operations. Dual VHF comm required.  
See additional requirements on AAUP.

ALSIF-2  
MISSED APPROACH: Climb to 4000 on heading 100° and AHN VOR/DME R-235 to CONNI/AHN 30.2 DME and hold.

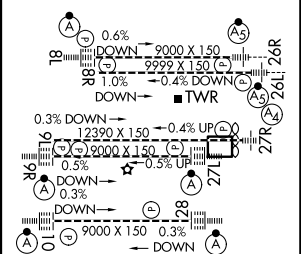
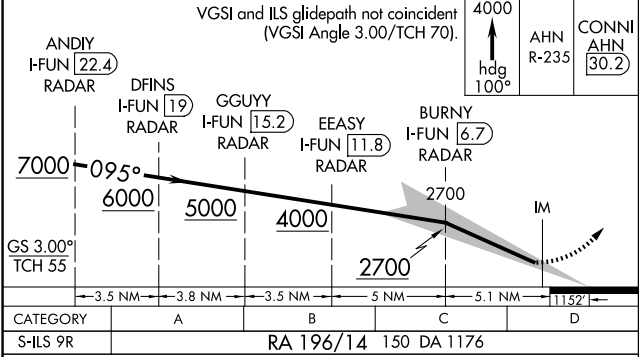
D-ATIS ARR <b>119.65</b> DEP <b>125.55</b>	ATLANTA APP CON <b>127.9 379.9</b>	ATLANTA TOWER 8L-26R 8R-26L 9L-27R 9R-27L 10-28 RWYS <b>119.1 125.325 123.85 119.3 119.5 254.4</b> <b>PRM 132.55</b>	ALL RWYS <b>121.9 121.75 121.65 254.4</b>
--	--	---	---



CLNC DEL <b>118.1</b>	CPDLC
-----------------------------	-------



ELEV 1026	TDZE 1026
-----------	-----------



SA CATEGORY I ILS - SPECIAL AIRCREW  
& AIRCRAFT CERTIFICATION REQUIRED

HIRL all Rwy's  
TDZ/CL Rwy's 8L, 9R, 10, 26R,  
27L and 28