

ATLANTA, GEORGIA

AL-26 (FAA)

25219

ILS PRM RWY 9R (CAT II & III)
(CLOSE PARALLEL)

HARTSFIELD/JACKSON ATLANTA INTL (ATL)

LOC/DME I-FUN 108.9 Chan 26	APP CRS 095°	Rwy Ldg TDZE 1026 Apt Elev 1026
---	------------------------	---

ALSIF-2



MISSED APPROACH: Climb to 4000 on heading 100° and AHN VOR/DME R-235 to CONNI/AHN 30.2 DME and hold.

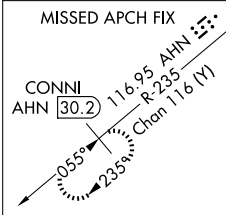
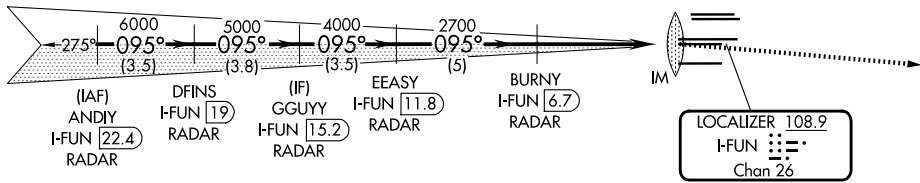
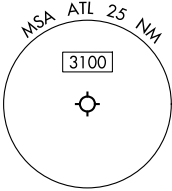
RADAR required for procedure entry, DME.

Simultaneous approach authorized. Use of FD or AP required during simultaneous operations. Dual VHF comm required. See additional requirements on AAUP.

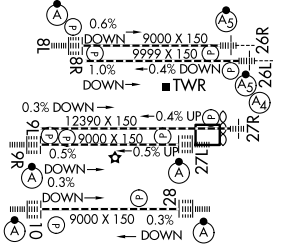
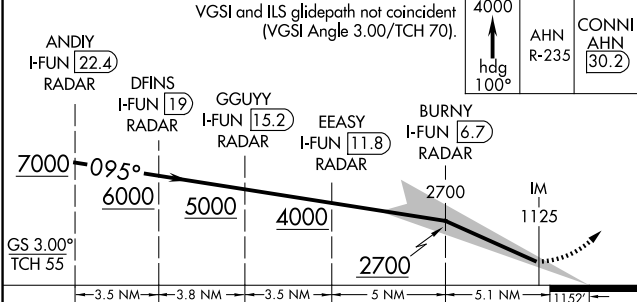
D-ATIS ARR 119.65 DEP 125.55	ATLANTA APP CON 127.9 379.9	ATLANTA TOWER 8L-26R 8R-26L 9L-27R 9R-27L 10-28 RWYS 119.1 125.325 123.85 119.3 119.5 254.4 PRM 132.55	ALL RWYS 121.9 121.75 121.65 254.4	GND CON (8L-26R,8R-26L) (9L-27R,9R-27L) 10-28 RWYS 121.9 121.75 121.65 254.4
--	--	---	---	---

CLNC
DEL
118.1

CPDLC



ELEV 1026 **D** TDZE 1026



CATEGORY	A	B	C	D
S-ILS 9R		CAT II RA 118/12 100 DA 1126		
S-ILS 9R		CAT III RVR 03		

**CATEGORY II & III ILS SPECIAL AIRCREW
& AIRCRAFT CERTIFICATION REQUIRED**

HIRL all Rwws
TDZ/CL Rwws 8L, 9R, 10, 26R,
27L and 28

ATLANTA, GEORGIA
Amdt 3 22APR21

33°38'N-84°26'W HARTSFIELD/JACKSON ATLANTA INTL (ATL)
ILS PRM RWY 9R (CAT II & III) (CLOSE PARALLEL)

SE-4, 07 AUG 2025 to 04 SEP 2025

SE-4, 07 AUG 2025 to 04 SEP 2025