

ATLANTA, GEORGIA

AL-26 (FAA)

25219

ILS PRM RWY 28 (SA CAT I)

(CLOSE PARALLEL)

HARTSFIELD/JACKSON ATLANTA INTL (ATL)

LOC/DME I-PKU	APP CRS	Rwy Ldg TDZE	9000
111.75	275°	998	
Chan 54(Y)		Apt Elev	1026

RNAV 1-GPS or RADAR required for procedure entry.
From TERII: RNAV 1-GPS required. DME or RADAR required.

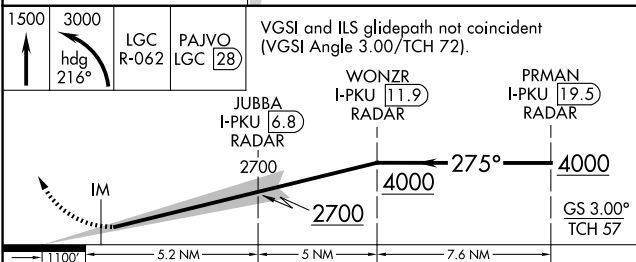
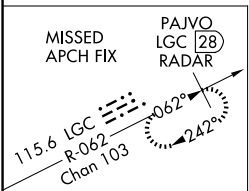
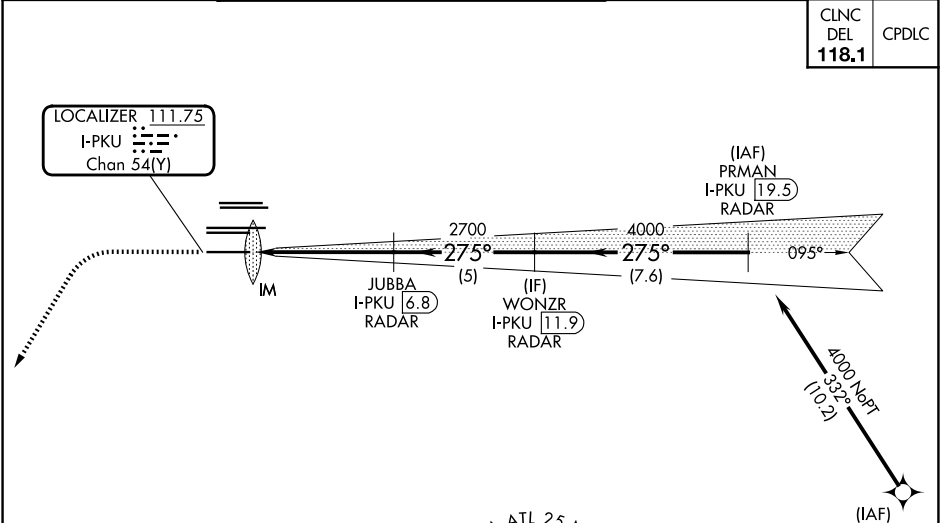
Simultaneous approach authorized. Use of FD or AP required during simultaneous operations. Dual VHF comm required. See additional requirements on AAUP. Requires specific OPSPEC, MSPEC, or LOA approval.

ALSF-2

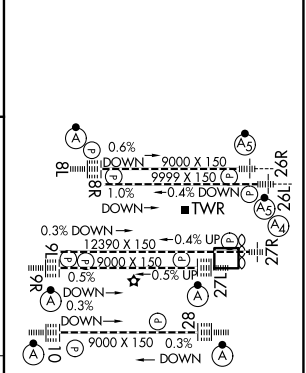
MISSED APPROACH: Climb to 1500 then climbing left turn to 3000 on heading 216° and LGC VORTAC R-062 to PAJVO/LGC 28 DME/RADAR and hold.

D-ATIS	ATLANTA APP CON	ATLANTA TOWER	ALL RWYS	GND CON	ALL RWYS
ARR 119.65	127.9 379.9	8L-26R 8R-26L 9L-27R 9R-27L 10-28	119.1 125.325 123.85 119.3 119.5 254.4	(8L-26R, 8R-26L) (9L-27R, 9R-27L) 10-28	121.9 121.75 121.65 254.4
DEP 125.55		PRM 133.425			

CLNC DEL	CPDLC
118.1	



ELEV 1026	TDZE 998
-----------	----------



CATEGORY	A	B	C	D
S-ILS 28	RA 264/14	150 DA 1148		

SA CATEGORY I ILS - SPECIAL AIRCREW & AIRCRAFT CERTIFICATION REQUIRED

ATLANTA, GEORGIA
Amdt 5 07OCT21

33°38'N-84°26'W

HARTSFIELD/JACKSON ATLANTA INTL (ATL)

ILS PRM RWY 28 (SA CAT I) (CLOSE PARALLEL)

HIRL all Rwy's
TDZ/CL Rwy's 8L, 9R,
10, 26R, 27L and 28