

ATLANTA, GEORGIA

AL-26 (FAA)

25219

ILS PRM RWY 28 (CAT II) (CLOSE PARALLEL)

HARTSFIELD/JACKSON ATLANTA INTL (ATL)

LOC/DME I-PKU 111.75 Chan 54 (Y)	APP CRS 275°	Rwy Ldg TDZE 998 Apt Elev 1026
------------------------------------------------------	------------------------	----------------------------------------------------

RNAV 1-GPS or RADAR required for procedure entry.
From TERII: RNAV 1-GPS required. DME or RADAR required.

Simultaneous approach authorized. Use of FD or AP required during simultaneous operations. Dual VHF comm required. See additional requirements on AAUP.

ALSF-2



MISSED APPROACH: Climb to 1500 then climbing left turn to 3000 on heading 216° and LGC VORTAC R-062 to PAJVO/LGC 28 DME/RADAR and hold.

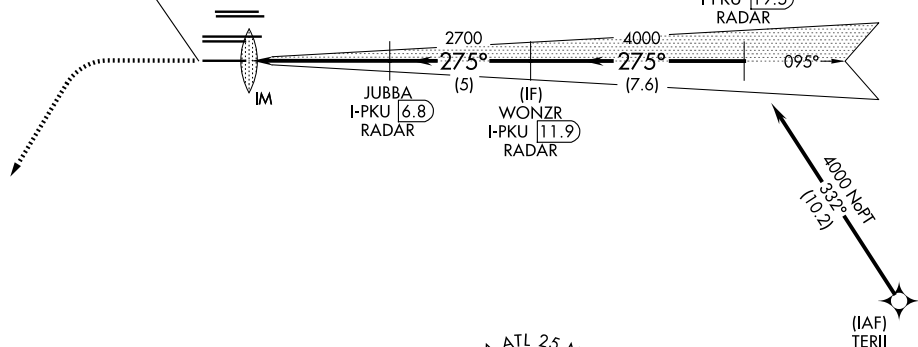
D-ATIS ARR 119.65 DEP 125.55	ATLANTA APP CON 127.9 379.9	ATLANTA TOWER 8L-26R 8R-26L 9L-27R 9R-27L 10-28 RWYS 119.1 125.325 123.85 119.3 119.5 254.4 PRM 133.425	ALL RWYS (8L-26R,8R-26L) (9L-27R,9R-27L) 10-28 121.9 121.75 121.65 254.4
--------------------------------------------------	------------------------------------------	--------------------------------------------------------------------------------------------------------------------------------	------------------------------------------------------------------------------------------

CLNC
DEL
118.1

CPDLC

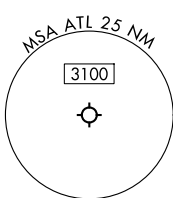
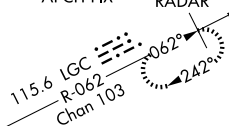
LOCALIZER **111.75**

I-PKU
Chan **54**(Y)

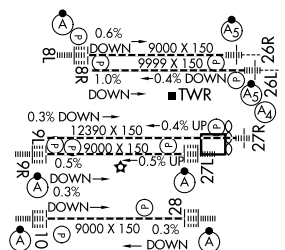
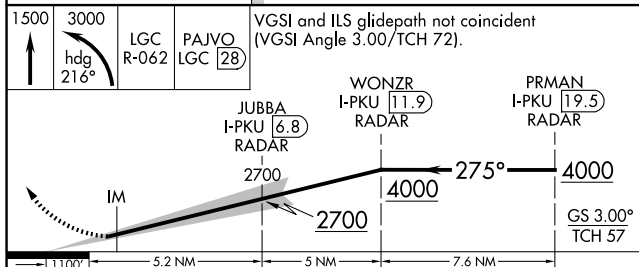


MISSED
APCH FIX

PAJVO
LGC **28**
RADAR



ELEV 1026 **D** TDZE 998



CATEGORY	A	B	C	D
S-ILS 28	RA 188/12	100 DA 1098		

**CATEGORY II ILS - SPECIAL AIRCREW
& AIRCRAFT CERTIFICATION REQUIRED**

HIRL all Rwys
TDZ/CL Rwys 8L, 9R,
10, 26R, 27L and 28

ATLANTA, GEORGIA

33°38'N-84°26'W

HARTSFIELD/JACKSON ATLANTA INTL (ATL)

Amtd 5 07OCT21

ILS PRM RWY 28 (CAT II) (CLOSE PARALLEL)

SE-4, 07 AUG 2025 to 04 SEP 2025