

LOC/DME I-PKU  
**111.75**  
Chan **54**(Y)

APP CRS  
**275°**

Rwy Ldg  
TDZE **998**  
Apt Elev **1026**

**ILS PRM RWY 28 (CLOSE PARALLEL)**  
HARTSFIELD/JACKSON ATLANTA INTL (ATL)

RNAV 1-GPS or RADAR required for procedure entry.  
From TERII: RNAV 1-GPS required. DME or RADAR required.

Simultaneous approach authorized. Use of FD or AP required during simultaneous operations. Dual VHF comm required. See additional requirements on AAUP.

ALSIF-2

MISSED APPROACH: Climb to 1500 then climbing left turn to 3000 on heading 216° and LGC VORTAC R-062 to PAJVO/LGC 28 DME/RADAR and hold.

D-ATIS  
ARR **119.65**  
DEP **125.55**

ATLANTA  
APP CON  
**127.9 379.9**

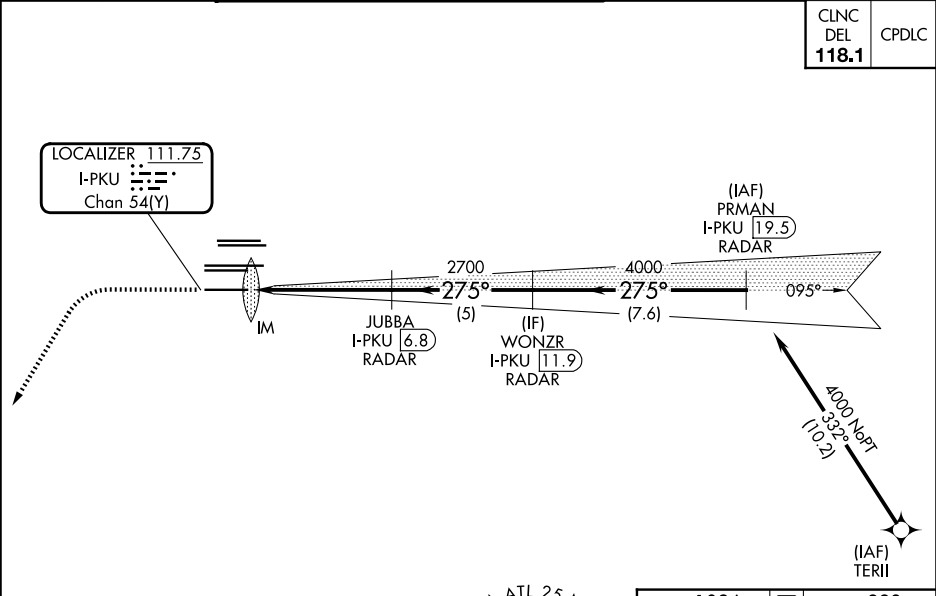
ATLANTA TOWER  
8L-26R 8R-26L 9L-27R 9R-27L 10-28 RWYS  
**119.1 125.325 123.85 119.3 119.5 254.4**  
**PRM 133.425**

ALL  
RWYS  
(8L-26R,8R-26L) (9L-27R,9R-27L) 10-28  
**121.9 121.75 121.65 254.4**

GND CON  
**121.9 121.75 121.65 254.4**

CNLC  
DEL  
**118.1**

CPDLC



MISSED APCH FIX  
PAJVO LGC 28 RADAR

115.6 LGC R-062 Chan 103

1500 3000 hdg 216°

LGC R-062 PAJVO LGC 28

VGSI and ILS glidepath not coincident (VGSI Angle 3.00/TCH 72).

WONZR I-PKU 11.9 RADAR

PRMAN I-PKU 19.5 RADAR

JUBBA I-PKU 6.8 RADAR

IM

2700 4000 275° 4000

GS 3.00° TCH 57

0.1 5.1 NM 5 NM 7.6 NM

CATEGORY A B C D

S-ILS 28 1198/18 200 (200-1/2)

ELEV 1026 TDZE 998

Diagram showing various altitudes and distances for the approach.

1500 3000 hdg 216°

LGC R-062 PAJVO LGC 28

VGSI and ILS glidepath not coincident (VGSI Angle 3.00/TCH 72).

WONZR I-PKU 11.9 RADAR

PRMAN I-PKU 19.5 RADAR

JUBBA I-PKU 6.8 RADAR

IM

2700 4000 275° 4000

GS 3.00° TCH 57

0.1 5.1 NM 5 NM 7.6 NM

CATEGORY A B C D

S-ILS 28 1198/18 200 (200-1/2)

ELEV 1026 TDZE 998

Diagram showing various altitudes and distances for the approach.