

LOC/DME I-FSQ
108.5
Chan **22**

APP CRS
275°

Rwy Ldg
8865
TDZE
999
Apt Elev
1026

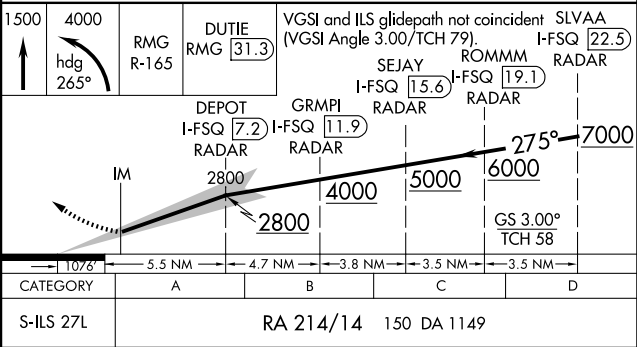
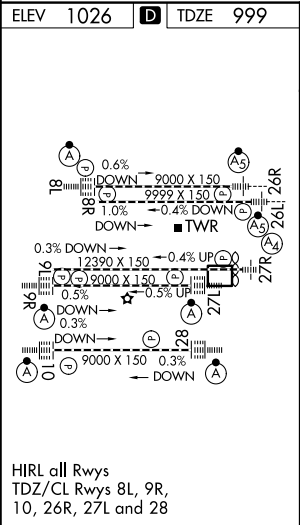
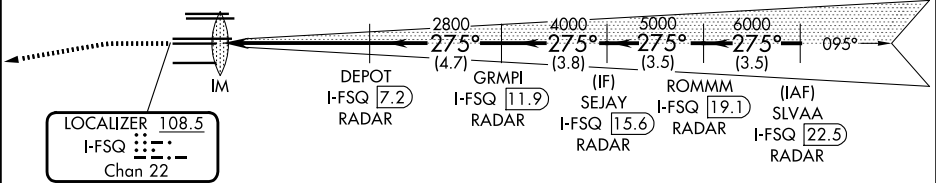
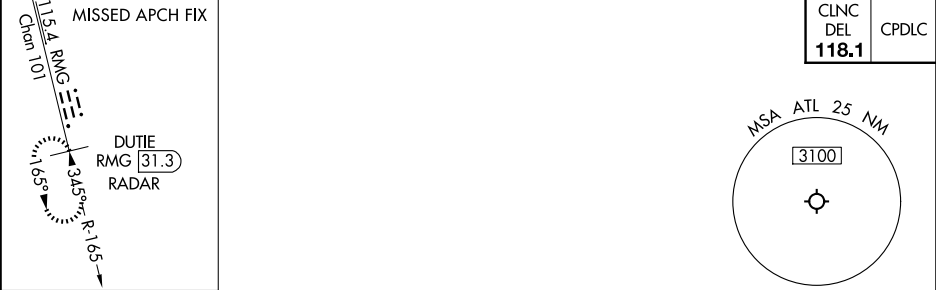
RADAR required for procedure entry. DME or RADAR required.

Simultaneous approach authorized. Use of FD or AP required during simultaneous operations. Dual VHF Comm required. See additional requirements on AAUP. Requires specific OPSPEC, MSPEC, or LOA approval.

ALSF-2

MISSED APPROACH: Climb to 1500 then climbing left turn to 4000 on heading 265° and RMG VORTAC R-165 to DUTIE/ RMG 31.3 DME/RADAR and hold.

D-ATIS ARR 119.65 DEP 125.55	ATLANTA APP CON 127.9 379.9	ATLANTA TOWER 8L-26R 8R-26L 9L-27R 9R-27L 10-28 RWYS 119.1 125.325 123.85 119.3 119.5 254.4 PRM 132.55	ALL RWYS 121.9 121.75 121.65 254.4
--	--	---	---



SA CATEGORY I ILS- SPECIAL AIRCREW
& AIRCRAFT CERTIFICATION REQUIRED

33°38'N-84°26'W

HARTSFIELD/JACKSON ATLANTA INTL (ATL)

ILS PRM RWY 27L (SA CAT I) (CLOSE PARALLEL)

SE-4, 07 AUG 2025 to 04 SEP 2025

SE-4, 07 AUG 2025 to 04 SEP 2025