

ATLANTA, GEORGIA

AL-26 (FAA)

25219

ILS PRM RWY 27L (CAT II)

(CLOSE PARALLEL)

HARTSFIELD/JACKSON ATLANTA INTL (ATL)

LOC/DME I-FSQ <b>108.5</b> Chan <b>22</b>	APP CRS <b>275°</b>	Rwy Ldg TDZE <b>999</b> Apt Elev <b>1026</b>
---	------------------------	--

RADAR required for procedure entry. DME or RADAR required.

Simultaneous approach authorized. Use of FD or AP required during simultaneous operations. Dual VHF comm required. See additional requirements on AAUP.

ALSIF-2

MISSED APPROACH: Climb to 1500 then climbing left turn to 4000 on heading 265° and RMG VORTAC R-165 to DUTIE/RMG 31.3 DME/RADAR and hold.

D-ATIS ARR <b>119.65</b> <b>125.55</b>	ATLANTA APP CON <b>127.9 379.9</b>	ATLANTA TOWER 8L-26R 8R-26L 9L-27R 9R-27L 10-28 RWYS <b>119.1 125.325 123.85 119.3 119.5 254.4</b> <b>PRM 132.55</b>	ALL RWYS (8L-26R,8R-26L) (9L-27R,9R-27L) 10-28 <b>121.9 121.75 121.65 254.4</b>
--	--	---	--

MISSED APCH FIX

Chan 101

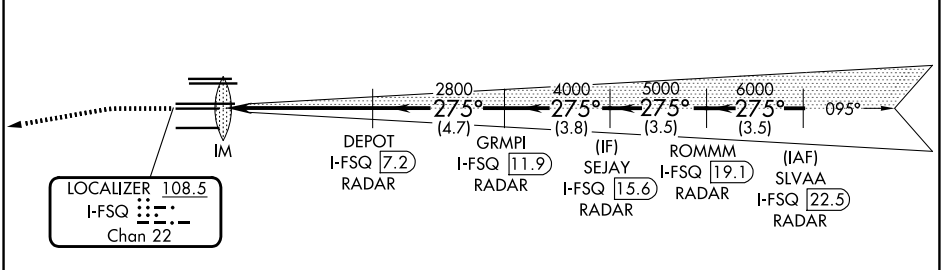
DUTIE RMG 31.3 RADAR

CLNC DEL **118.1**

CPDLC

MSA ATL 25 NM

3100



ELEV **1026** TDZE **999**

HIRL all Rwy

TDZ/CL Rwy 8L, 9R, 10, 26R, 27L and 28

Diagram showing various navigation aids and radars for the approach, including DUTIE, GRMPI, SEJAY, ROMMM, and SLVAA.

1500 4000 RMG R-165 DUTIE RMG 31.3

VGSI and ILS glidepath not coincident (VGSI Angle 3.00/TCH 79)

SLVAA I-FSQ 22.5

SEJAY I-FSQ 15.6 ROMMM I-FSQ 19.1

DEPOT I-FSQ 7.2 GRMPI I-FSQ 11.9

IM 2800 4000 5000 6000 7000

GS 3.00° TCH 58

1026' 5.5 NM 4.7 NM 3.8 NM 3.5 NM 3.5 NM

CATEGORY	A	B	C	D
S-ILS 27L	RA 127/12 100 DA 1099			

CATEGORY II ILS- SPECIAL AIRCREW & AIRCRAFT CERTIFICATION REQUIRED

SE-4, 07 AUG 2025 to 04 SEP 2025

SE-4, 07 AUG 2025 to 04 SEP 2025