

ATLANTA, GEORGIA


AL-26 (FAA)

25219

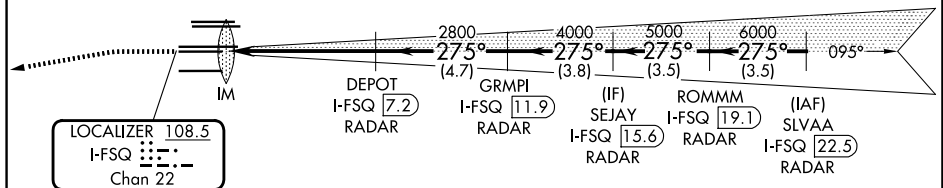
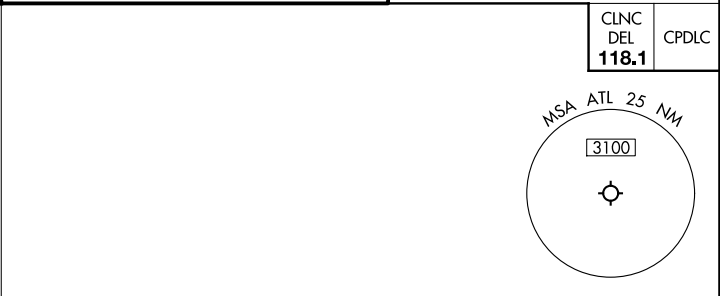
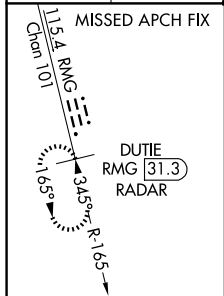
LOC/DME I-FSQ <b>108.5</b> Chan <b>22</b>	APP CRS <b>275°</b>	Rwy Ldg TDZE <b>999</b> Apt Elev <b>1026</b>
---	------------------------	--

# ILS PRM RWY 27L (CLOSE PARALLEL)

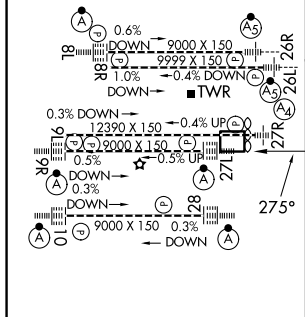
HARTSFIELD/JACKSON ATLANTA INTL (ATL)

RADAR required for procedure entry. DME or RADAR required.	ALSF-2 	MISSED APPROACH: Climb to 1500 then climbing left turn to 4000 on heading 265° and RMG VORTAC R-165 to DUTIE/RMG 31.3 DME/RADAR and hold.
Simultaneous approach authorized. Use of FD or AP required during simultaneous operations. Dual VHF comm required. See additional requirements on AAUP.		

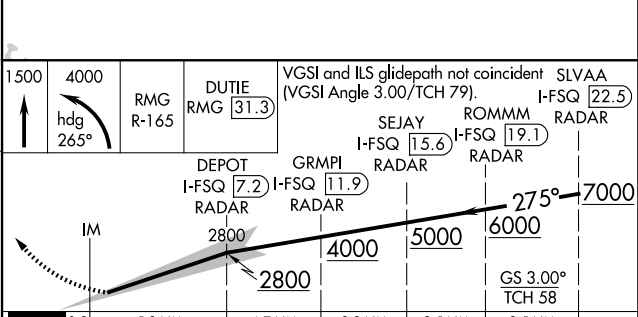
D-ATIS ARR <b>119.65</b> DEP <b>125.55</b>	ATLANTA APP CON <b>127.9 379.9</b>	ATLANTA TOWER 8L-26R 8R-26L 9L-27R 9R-27L 10-28 RWYS <b>119.1 125.325 123.85 119.3 119.5 254.4</b> <b>PRM 132.55</b>	ALL RWYS (8L-26R, 8R-26L) (9L-27R, 9R-27L) 10-28 <b>121.9 121.75 121.65 254.4</b>
--	--	---	--



ELEV 1026 **D** TDZE 999



HIRL all Rwy  
TDZ/CL Rwy 8L, 9R,  
10, 26R, 27L and 28



CATEGORY	A	B	C	D
S-ILS 27L	1199/18 200 (200-1/2)			

SE-4, 07 AUG 2025 to 04 SEP 2025

SE-4, 07 AUG 2025 to 04 SEP 2025