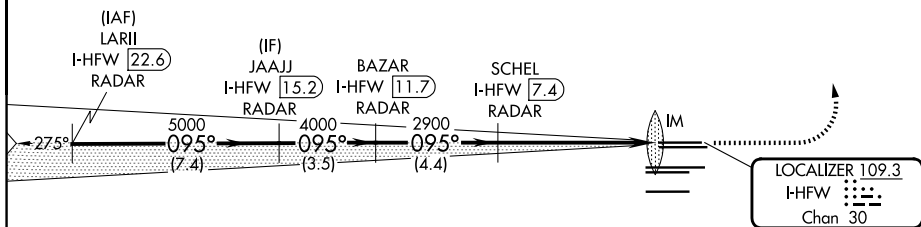
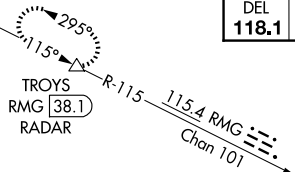
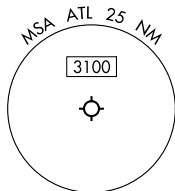


ILS or LOC RWY 8L
HARTSFIELD/JACKSON ATLANTA INTL (ATTN)

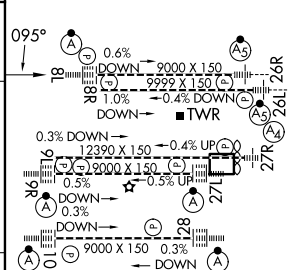
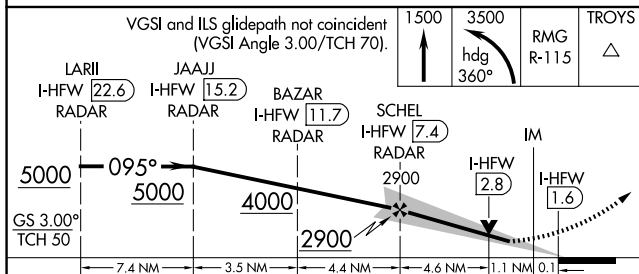
Rwy 8L
ALSF-2

MISSED APPROACH: Climb to 1500 then climbing left turn to 3500 on heading 360° and RMG VORTAC R-115 to TROYS/RMG 38.1 DME/RADAR and hold.

CLNC DEL 118.1	CPDLC
-----------------------------	-------



ELEV 1026	D	TDZE 8L 1015 TDZE 8R 1024
-----------	----------	------------------------------



HIRL all Rwy's					
TDZ/CL Rwy's 8L,					
9R, 10, 26R, 27L and 28					
FAF to MAP 5.8 NM					
Knots	60	90	120	150	180
Min:Sec	5:48	3:52	2:54	2:19	1:56