

LOC/DME I-BRU
108.7
Chan **24**

APP CRS
275°

Rwy Ldg
9999 **8500**

TDZE
996 **990**

Apt Elev
1026 1026

ILS or LOC RWY 26L

HARTSFIELD/JACKSON ATLANTA INTL (ATL)

RADAR required.

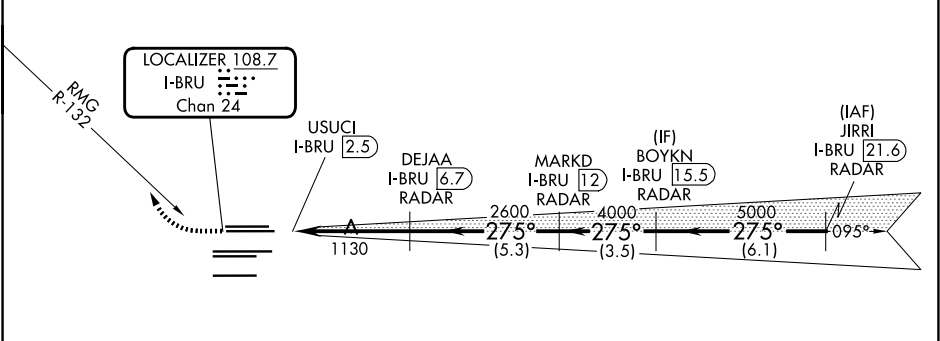
▼ Inop table does not apply to sidestep Rwy 26R Cats A and B. For inop ALS, increase S-ILS 26L all Cats visibility to RVR 4500 and S-LOC 26L Cat E visibility to RVR 6000. For inop ALS to Rwy 26R, increase sidestep 26R Cat E visibility to 2 SM. Simultaneous approach authorized.

Rwy 26L
MALSR

Rwy 26R
MALSR

MISSED APPROACH: Climb to 1500 then climbing right turn to 4000 on heading 290° and RMG R-132 to DALAS INT/RMG VORTAC 18.5 DME and hold.

D-ATIS	ATLANTA	ATLANTA TOWER					ALL	GND CON	ALL
ARR 119.65	APP CON	8L-26R	8R-26L	9L-27R	9R-27L	10-28	RWYS	(8L-26R,8R-26L) (9L-27R,9R-27L)	10-28 RWYS
DEP 125.55	127.9 379.9	119.1	125.325	123.85	119.3	119.5	254.4	121.9	121.75 121.65 254.4



ELEV 1026

D

TDZE 26L 996
TDZE 26R 990

1500 4000

hdg 290°

RMG R-132

DALAS △

275°

USUCI I-BRU (2.5)

DEJAA I-BRU (6.7) RADAR

MARKD I-BRU (12) RADAR

BOYKN I-BRU (15.5) RADAR

JIRRI I-BRU (21.6) RADAR

2600 4000 5000

275° 5000

GS 3.00° TCH 52

0.6% DOWN 9000 X 150

0.6% DOWN 9999 X 150

1.0% DOWN 0.4% DOWN

0.3% DOWN 12390 X 150

0.5% DOWN 0.5% UP

0.3% DOWN 9000 X 150

0.3% DOWN

HIRL all Rwy

TDZ/CL Rwy 8L,

9R, 10, 26R, 27L and 28

FAF to MAP 4.2 NM

Knots 60 90 120 150 180

Min:Sec 4:12 2:48 2:06 1:41 1:24

CATEGORY	A	B	C	D	E
S-ILS 26L	1280/24 284 (300-½)				
S-LOC 26L	1380/24 384 (400-½)		1380/35 384 (400-⅝)		
SIDESTEP 26R	1380/55 390 (400-1)			1380-1½ 390 (400-1½)	