

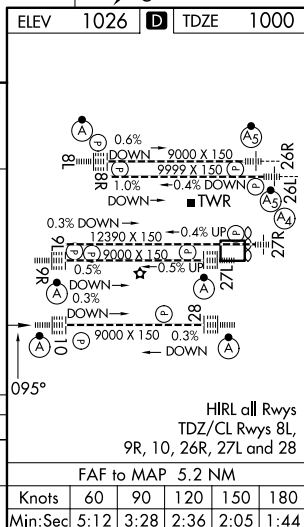
25219

ILS or LOC RWY 10  
HARTSFIELD/JACKSON ATLANTA INTL (ATL)

**MISSED APPROACH:** Climb to 1400 then climbing right turn to 3000 on heading 120° and AHN R-222 to IHOPE/AHN 36 DME and hold.

ALSF-2

CLNC DEL <b>118.1</b>	CPDLC
-----------------------------	-------



HARTSFIELD/JACKSON ATLANTA INTL (ATL)  
33°38'N-84°26'W ILS or LOC RWY 10

ILS or LOC RWY 10

SE-4, 07 AUG 2025 to 04 SEP 2025