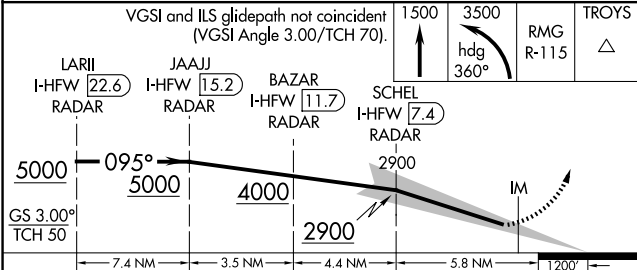
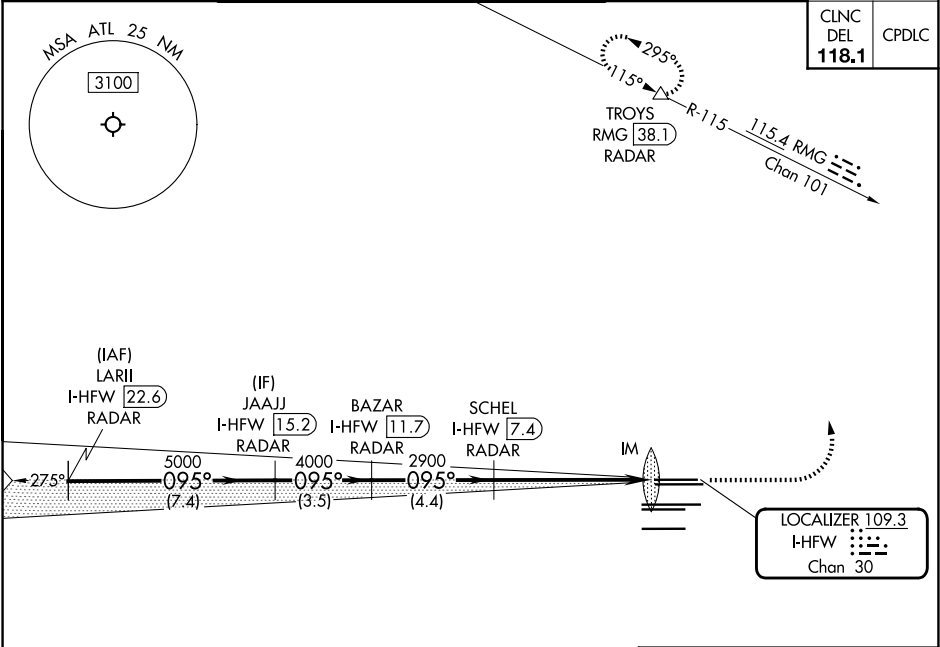


LOC/DME I-HFW <b>109.3</b> Chan <b>30</b>	APP CRS <b>095°</b>	Rwy Ldg TDZE Apt Elev <b>8800</b> <b>1015</b> <b>1026</b>
---	------------------------	--

**ILS RWY 8L (SA CAT I)**  
HARTSFIELD/JACKSON ATLANTA INTL (ATL)

RADAR required for procedure entry. DME or RADAR required.				ALSIF-2 	MISSED APPROACH: Climb to 1500 then climbing left turn to 3500 on heading 360° and RMG VORTAC R-115 to TROYS/RMG 38.1 DME/RADAR and hold.
Simultaneous approach authorized. Requires specific OPSPEC, MSPEC, or LOA approval.					
D-ATIS ARR <b>119.65</b> DEP <b>125.55</b>	ATLANTA APP CON <b>127.9 379.9</b>	ATLANTA TOWER 8L-26R <b>119.1</b> 25.325 123.85 119.3 119.5 254.4			GND CON ALL RWYS <b>121.9</b> <b>121.75</b> <b>121.65</b> <b>254.4</b>



CATEGORY	A	B	C	D
S-ILS 8L	RA 147/14 150 DA 1165			
SA CATEGORY I ILS - SPECIAL AIRCREW & AIRCRAFT CERTIFICATION REQUIRED				

