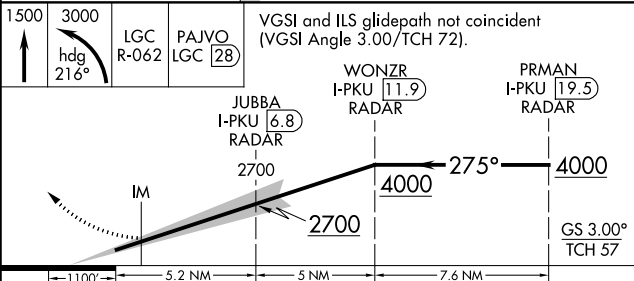
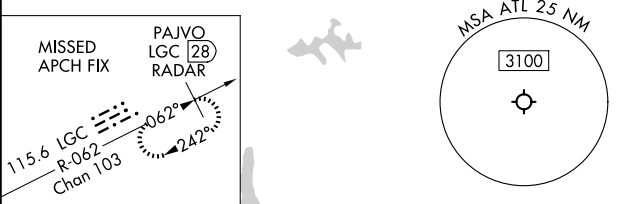
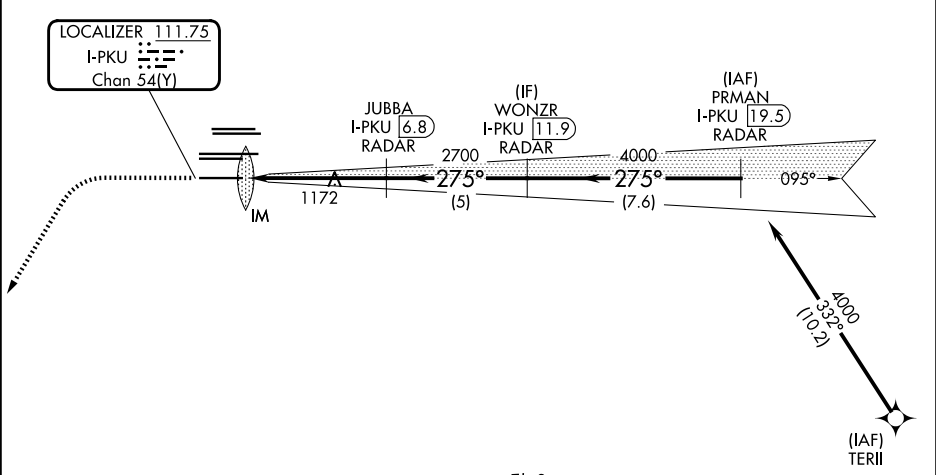


LOC/DME I-PKU 111.75 Chan 54 (Y)	APP CRS 275°	Rwy Ldg TDZE 998 Apt Elev 1026	HARTSFIELD/JACKSON ATLANTA INTL (ATL)	
HARTSFIELD/JACKSON ATLANTA INTL (ATL)			ILS RWY 28 (CAT II)	

RNAV 1-GPS or RADAR required for procedure entry. From TERII: RNAV 1-GPS required. DME or RADAR required.		ALSIF-2	MISSED APPROACH: Climb to 1500 then climbing left turn to 3000 on heading 216° and LGC VORTAC R-062 to PAJVO/LGC 28 DME/RADAR and hold.
Simultaneous approach authorized.		(A)	

D-ATIS ARR 119.65	ATLANTA APP CON	ATLANTA TOWER					ALL RWYS	GND CON		ALL RWYS
DEP 125.55	127.9 379.9	8L-26R	8R-26L	9L-27R	9R-27L	10-28	119.3 119.5 254.4	121.9	121.75	121.65 254.4

CLNC DEL	CPDLC
118.1	



CATEGORY	A	B	C	D
S-ILS 28	RA 188/12 100 DA 1098			
CATEGORY II ILS - SPECIAL AIRCREW & AIRCRAFT CERTIFICATION REQUIRED				

ELEV 1026	D	TDZE 998
-----------	---	----------

