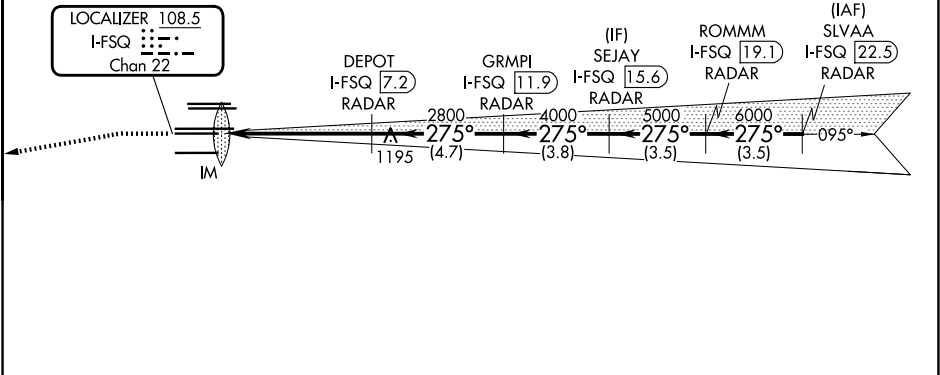
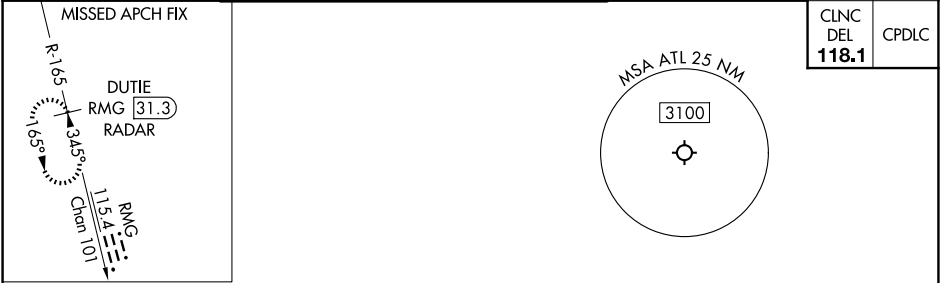


LOC/DME I-FSQ 108.5 Chan 22	APP CRS 275°	Rwy Ldg TDZE 999 Apt Elev 1026
---	------------------------	--

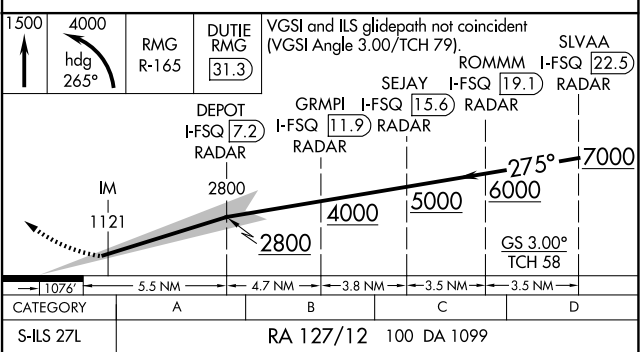
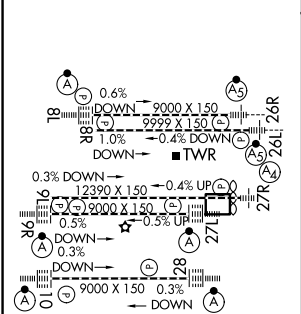
ILS RWY 27L (CAT II)
HARTSFIELD/JACKSON ATLANTA INTL (ATL)

DME or RADAR required. RADAR required for procedure entry.	ALSF-2 	MISSED APPROACH: Climb to 1500 then climbing left turn to 4000 on heading 265° and RMG VORTAC R-165 to DUTIE/RMG 31.3 DME/RADAR and hold.
Simultaneous approach authorized.		

D-ATIS ARR 119.65 DEP 125.55	ATLANTA APP CON 127.9 379.9	ATLANTA TOWER 8L-26R 8R-26L 9L-27R 9R-27L 10-28 RWYS 119.1 125.325 123.85 119.3 119.5 254.4	ALL RWYS 121.9 121.75 121.65 254.4	GND CON (8L-26R,8R-26L) (9L-27R,9R-27L) 10-28 RWYS 121.9 121.75 121.65 254.4	ALL RWYS 121.9 121.75 121.65 254.4
--	--	--	---	---	---



ELEV 1026	D	TDZE 999
-----------	----------	----------



CATEGORY II ILS- SPECIAL AIRCREW & AIRCRAFT CERTIFICATION REQUIRED