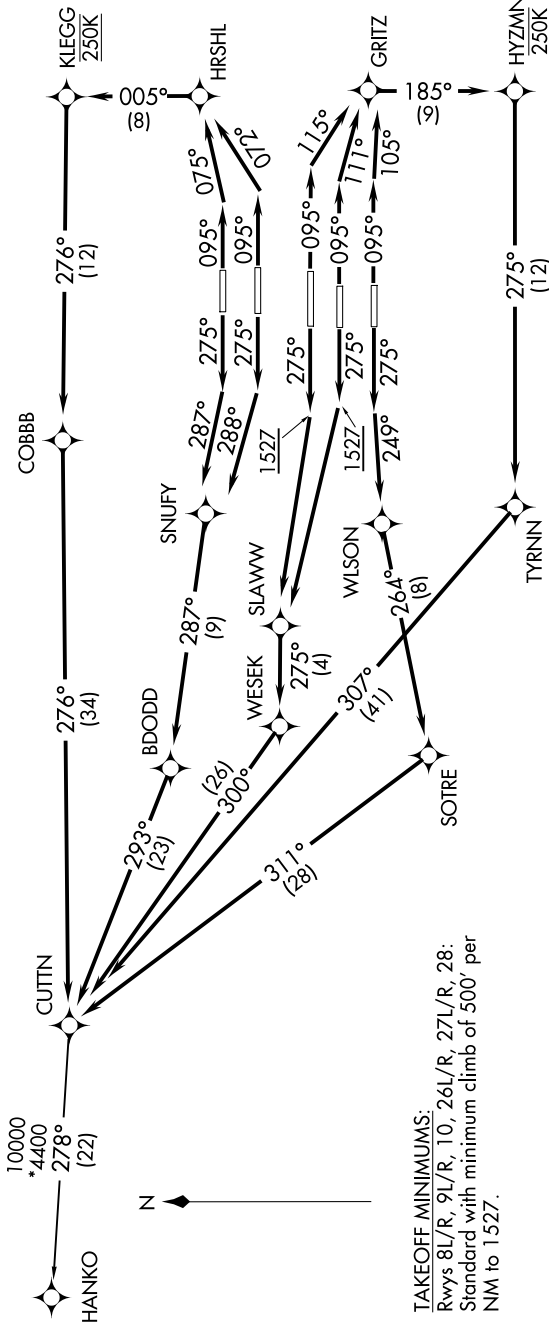


SE-4, 07 AUG 2025 to 04 SEP 2025

TOP ALTITUDE:  
10000

- NOTE: If unable to accept climb rate, advise Clearance Delivery on initial contact.  
NOTE: Use departure frequency depicted unless otherwise advised.  
NOTE: For Turbojet aircraft only.  
NOTE: DME/DME/IRU or GPS Required.  
NOTE: RNAV 1.  
NOTE: RADAR Required for non-GPS equipped aircraft.  
NOTE: Transponder code will be issued via PDC or Atlanta Clearance Delivery.  
NOTE: Accelerate to 250K, if unable, advise both tower and Departure Control on initial contact.  
NOTE: Aircraft at Midfield Ramps will advise Ramp Towers of departure SID prior to pushback.  
NOTE: Upon receipt of ATC clearance (from ATL Clearance Delivery), read back only your call sign and transponder code, unless you have a question.

D-ATIS 125.55  
CLNC DEL 118.1  
CPDIC  
GND CON  
121.9 254.4 (Rwys 8L-26R, 8R-26L)  
121.75 254.4 (Rwys 9L-27R, 9R-27L)  
121.65 254.4 (Rwy 10-28)  
ATLANTA TOWER  
119.1 254.4 (Rwy 8L-26R)  
125.325 254.4 (Rwy 8R-26L)  
119.3 254.4 (Rwy 9R-27L)  
123.85 254.4 (Rwy 9L-27R)  
119.5 254.4 (Rwy 10-28)  
ATLANTA DEP CON  
133.475 281.425 (Rwys 8L-26R, 8R-26L)  
125.65 281.425 (Rwys 9L-27R, 9R-27L)  
121.225 281.425 (Rwy 10-28)



(CONTINUED ON FOLLOWING PAGE)

NOTE: Chart not to scale.

SE-4, 07 AUG 2025 to 04 SEP 2025