

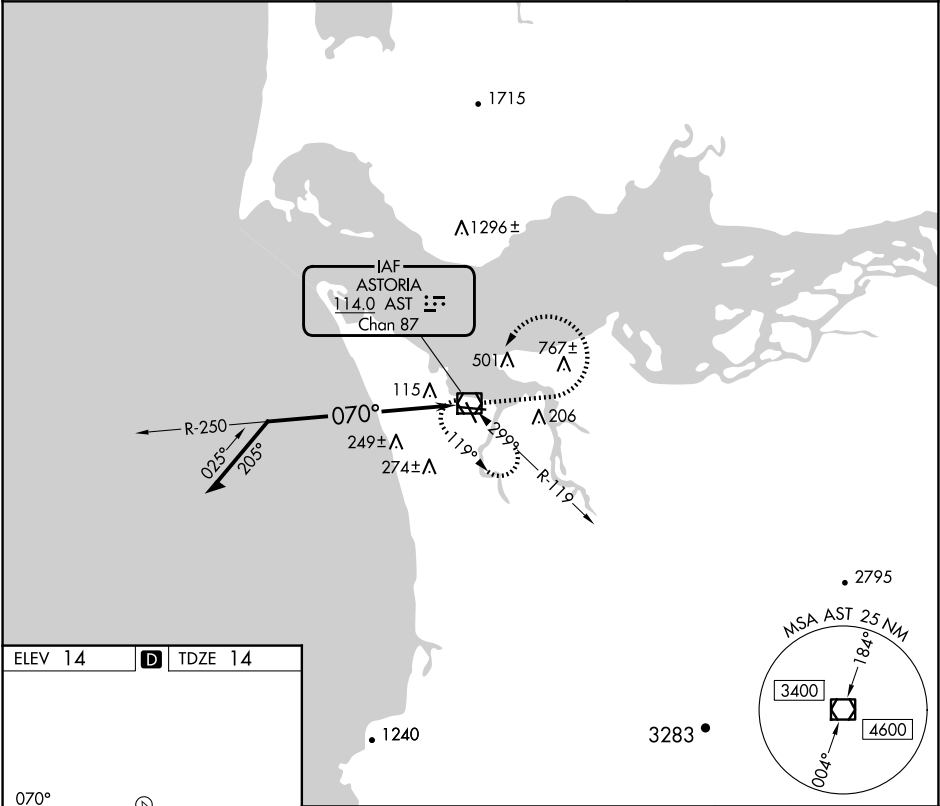
VOR/DME AST 114.0 Chan 87	APP CRS 070°	Rwy Ldg TDZE Apt Elev 14
---	------------------------	---------------------------------------

VOR RWY 8
ASTORIA RGNL (AST)

⚠ Rwy 8 helicopter visibility reduction below ¾ SM NA.

MISSED APPROACH: Climb to 1300 then climbing left turn to 4800 in AST VOR/DME holding pattern, continue climb-in-hold to 4800.

ASOS 135.375	SEATTLE CENTER 124.2 317.6	UNICOM 122.8 (CTAF)
------------------------	--------------------------------------	-------------------------------



ELEV 14 **D** TDZE 14

REIL Rwy 8 **⓪**
REIL Rwy 14
MIRL Rwy 8-26 and 14-32 **⓪**

070°
5794 X 100
4457 X 100
26
52

Remain within 10 NM

AST VOR/DME 2600

1300 4800 AST

2000 250° 070°

AST 2.4

2.1 NM

CATEGORY	A	B	C	D
S-8	720-1 706 (800-1)	720-2 706 (800-2)		
C CIRCLING	720-1 706 (800-1)	800-1 786 (800-1)	1080-3 1066 (1100-3)	1160-3 1146 (1200-3)

NW-1, 07 AUG 2025 to 04 SEP 2025

NW-1, 07 AUG 2025 to 04 SEP 2025