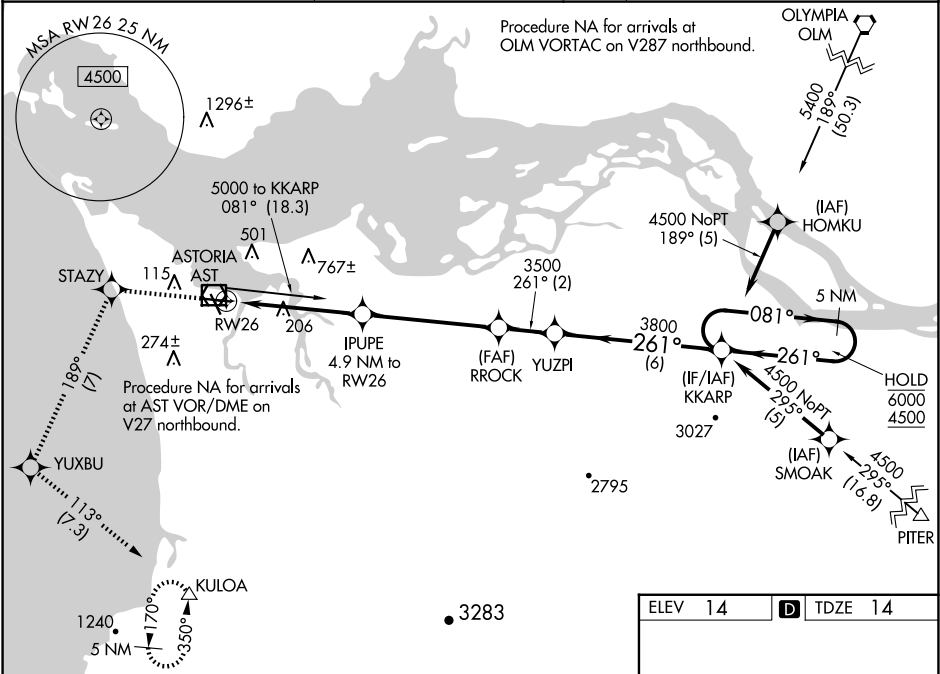


WAAS CH 97711 W26A	APP CRS 261°	Rwy Ldg TDZE 14 Apt Elev 14
--	------------------------	---

RNAV (GPS) RWY 26
ASTORIA RGNL (AST)

RNP APCH.	MALSR	MISSED APPROACH: (Do not exceed 210K until STAZY) Climb to 5000 direct STAZY and left turn on track 189° to YUXBU and left turn on track 113° to KULOA and hold, continue climb-in-hold to 5000.
Inop table does not apply to LPV all Cats. Rwy 26 helicopter visibility reduction below ¾ SM NA. For inop ALS, increase LNAV Cat A/B visibility to 1 SM and Cat C/D to 2 ½ SM.		

ASOS 135.375	SEATTLE CENTER 124.2 317.6	UNICOM 122.8 (CTAF) 0
------------------------	--------------------------------------	---------------------------------



5000	STAZY	YUXBU	KULOA	KKARP	5 NM Holding Pattern
↑	✧	✧	△		
* LNAV only	tr 189°	tr 113°			
	IPUPE 4.9 NM to RW26	RROCK 3500	YUZPI 3500		
	* 2.3 NM to RW26				
	2.3 NM	2.6 NM	4.9 NM	2 NM	6 NM
CATEGORY	A	B	C	D	
LPV DA	264-¾ 250 (300-¾)				
LNAV MDA	860-¾ 846 (900-¾) 860-1⅞ 846 (900-1⅞)				
CIRCLING	860-1¼ 846 (900-1¼) 1080-3 1160-3 1066 (1100-3) 1146 (1200-3)				

ELEV 14	TDZE 14
---------	---------

REIL Rwy 8 0
REIL Rwy 14
MIRL Rwy 8-26 and 14-32 0

NW-1, 07 AUG 2025 to 04 SEP 2025

NW-1, 07 AUG 2025 to 04 SEP 2025