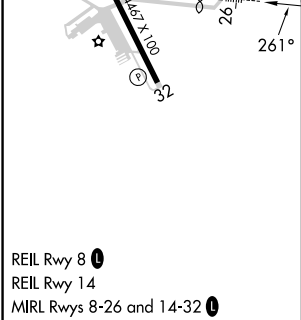
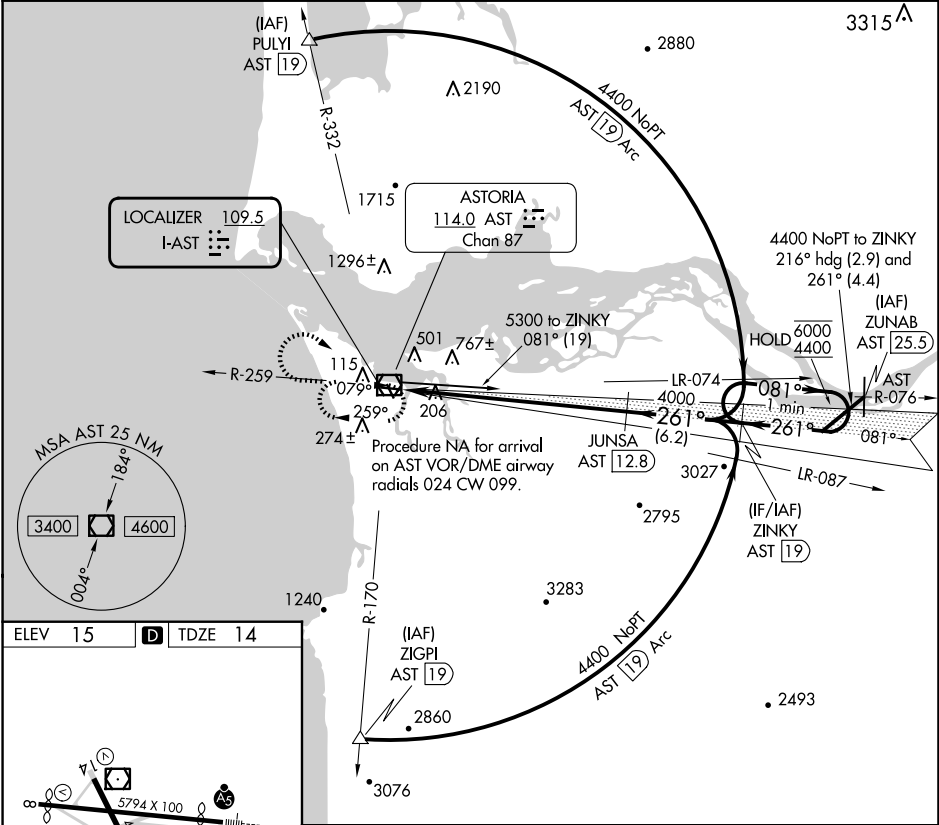


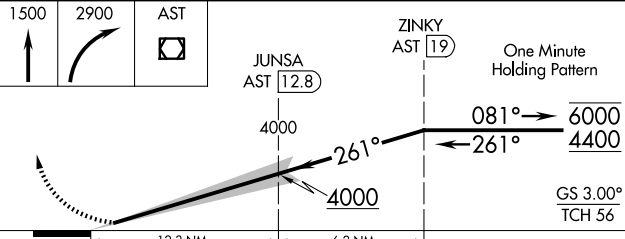
LOC I-AST	APP CRS	Rwy Ldg	4780
109.5	261°	TDZE	14
		Apt Elev	15

ILS RWY 26
ASTORIA RGNL (AST)

DME required for procedure entry.	MALSR	MISSED APPROACH: Climb to 1500 then climbing right turn to 2900 direct AST VOR/DME and hold.
<div><div></div><div></div></div> Rwy 26 helicopter visibility reduction below 3/4 SM NA. Inoperative table does not apply.	<div><div></div><div></div></div>	

ASOS 135.375	SEATTLE CENTER 124.2 317.6	UNICOM 122.8 (CTAF) 0
-----------------	-------------------------------	--------------------------



1500	2900	AST		
↑	↗	◻		
				
CATEGORY	A	B	C	D
S-ILS 26	264-1 250 (300-1)			

NW-1, 07 AUG 2025 to 04 SEP 2025

NW-1, 07 AUG 2025 to 04 SEP 2025