

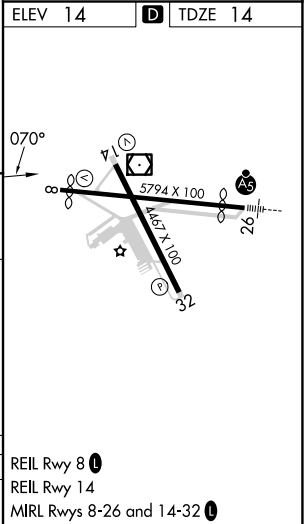
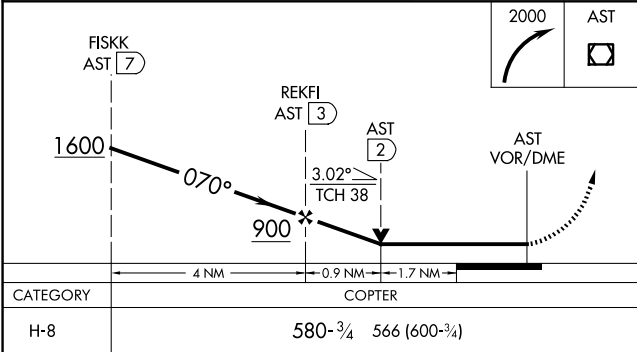
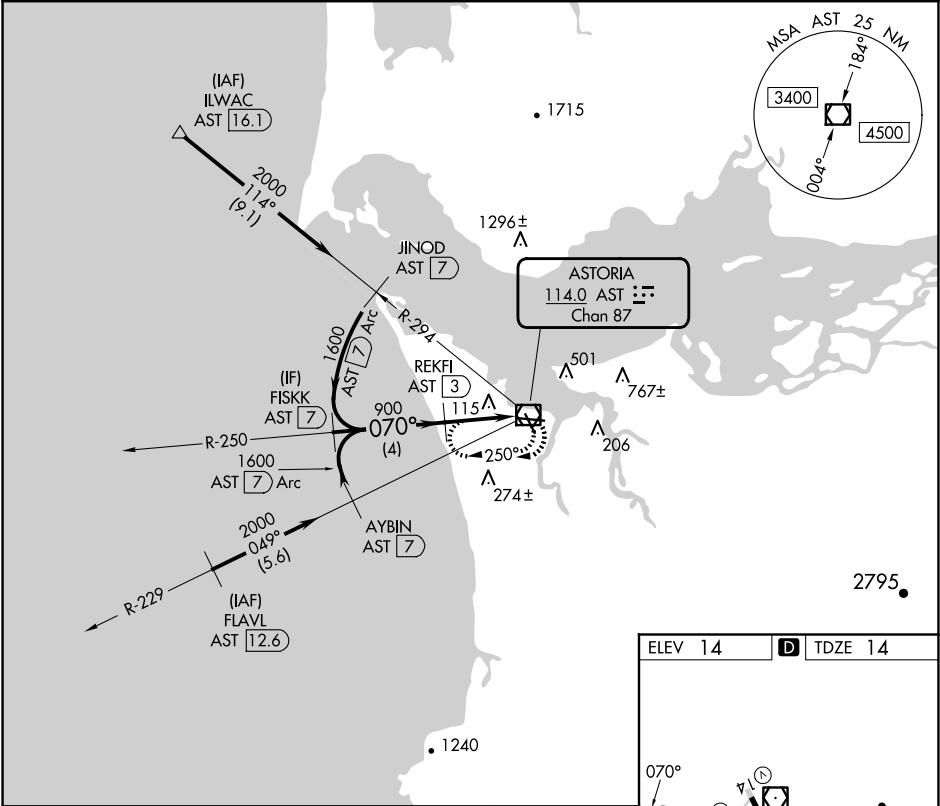
VOR/DME AST	APP CRS	Rwy Ldg	4894
114.0	070°	TDZE	14
Chan 87		Apt Elev	14

COPTER VOR RWY 8

ASTORIA RGNL (AST')

DME required.	MISSED APPROACH: Climbing right turn to 2000 in AST VOR/DME holding pattern.
NA	

ASOS 135.375	SEATTLE CENTER 124.2 317.6	UNICOM 122.8 (CTAF) 0
-----------------	-------------------------------	--------------------------



NW-1, 07 AUG 2025 to 04 SEP 2025

NW-1, 07 AUG 2025 to 04 SEP 2025