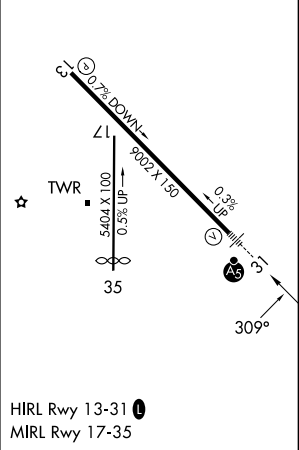
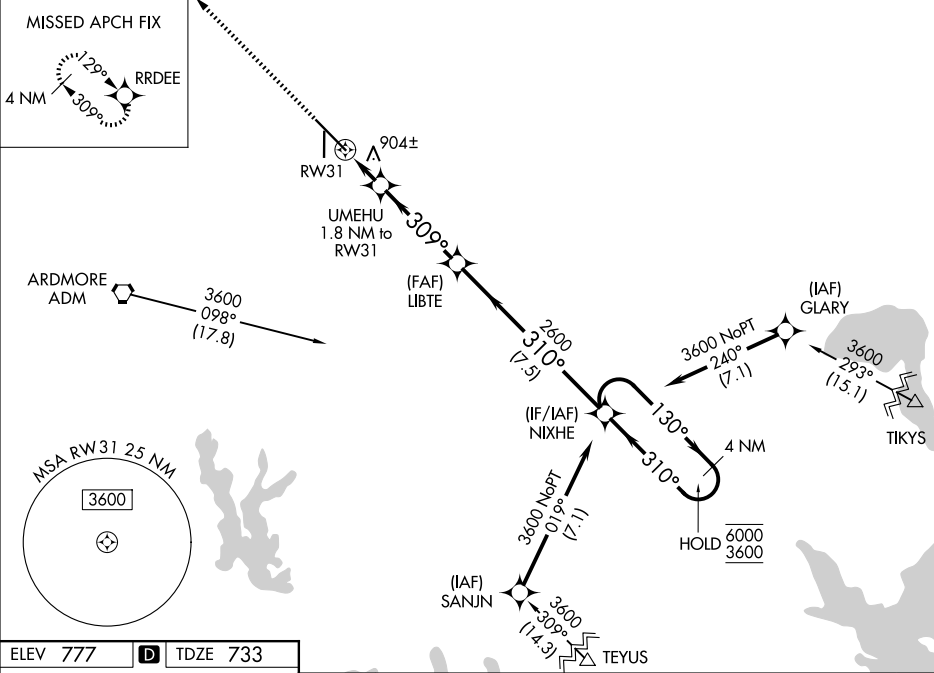


WAAS CH 69625 W31A	APP CRS 309°	Rwy Ldg TDZE 733 Apt Elev 777
--	------------------------	---

RNAV (GPS) RWY 31

ARDMORE MUNI (ADM)

RNP APCH - GPS.			<div>MALSR</div> <div><div><div>65</div><div><div><div></div><div></div><div></div></div></div><div></div></div></div>	MISSED APPROACH: Climb to 3600 direct RRDEE and hold.
<div><div><div><div></div><div></div></div><div><div></div><div></div></div></div><div>For uncompensated Baro-VNAV systems, LNAV/VNAV NA below -16°C or above 54°C. Inop table does not apply to LPV all Cats. For inop ALS, increase LNAV/VNAV all Cats and LNAV Cats C and D visibility to 1½ SM.</div></div>				
ATIS 125.6	FORT WORTH CENTER 124.75 323.0	ARDMORE TOWER★ 118.5 (CTAF) 0 257.7	GND CON 121.8	UNICOM 122.95



3600 ↑ RRDEE		UMEHU 1.8 NM to RW31		LIBTE 2600		NIXHE 4 NM Holding Pattern	
RW31		1.2 NM to RW31		309°		310°	
1.2 NM		0.6		3.9 NM		7.5 NM	
CATEGORY		A		B		C	
LPV DA		933-½		200 (200-½)			
LNAV/ VNAV DA		1200-1		467 (500-1)			
LNAV MDA		1160-½ 427 (400-½)		1160-¾ 427 (400-¾)			
CIRCLING		1300-1 523 (600-1)		1440-1 663 (700-1)		1500-2 723 (800-2)	
						1700-3 923 (1000-3)	