

WAAS
CH **93915**
W34A

APP CRS
340°

Rwy Ldg
TDZE **1600**
Apt Elev **1636**

RNAV (GPS) RWY 34

GREATER BINGHAMTON/EDWIN A LINK FLD (BGM)

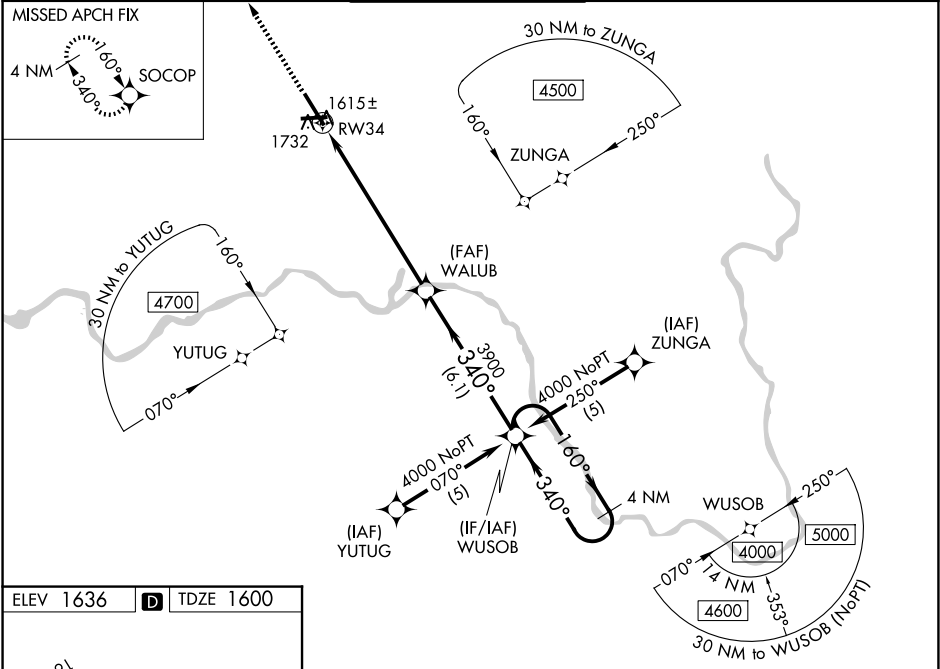
RNP APCH.

▼ For uncompensated Baro-VNAV systems, LNAV/VNAV NA below -18°C (0°F) or above 46°C (114°F). When local altimeter setting not received, use Ithaca altimeter setting and increase all DA 138 feet and all MDA 140 feet, increase LPV all Cats, LNAV Cats C and D and Circling Cat C and D visibility ½ SM, and LNAV/VNAV all Cats visibility ½ SM. For inoperative MALSR when using Ithaca altimeter setting increase LPV all Cats visibility to RVR 6000. Baro-VNAV and VDP NA when using Ithaca altimeter setting.

MALSR

MISSED APPROACH:
Climb to 3900 direct
SOCOP and hold.

ATIS	BINGHAMTON APP CON *	BINGHAMTON TOWER *	GND CON	CLNC DEL	UNICOM
128.15	118.6 257.625	119.3 (CTAF) 239.25	121.9	125.05	122.95



3900	SOCOP	VGSI and RNAV Glidepath not coincident (VGSI Angle 3.00/TCH 64).			4 NM Holding Pattern
*LNAV only		WALUB	WUSOB	160°	4000
*1.3 NM to RW34		3900	340°	340°	GP 3.00° TCH 44
1.3		5.8 NM	6.1 NM		
CATEGORY	A	B	C	D	
LPV DA	1800/24		200 (200-½)		
LNAV/VNAV DA	2082/60		482 (500-1¼)		
LNAV MDA	2040/24	440 (500-½)	2040/40 440 (500-¾)	2040/50 440 (500-1)	
CIRCLING	2120-1	484 (500-1)	2120-1½ 484 (500-1½)	2200-2 564 (600-2)	