

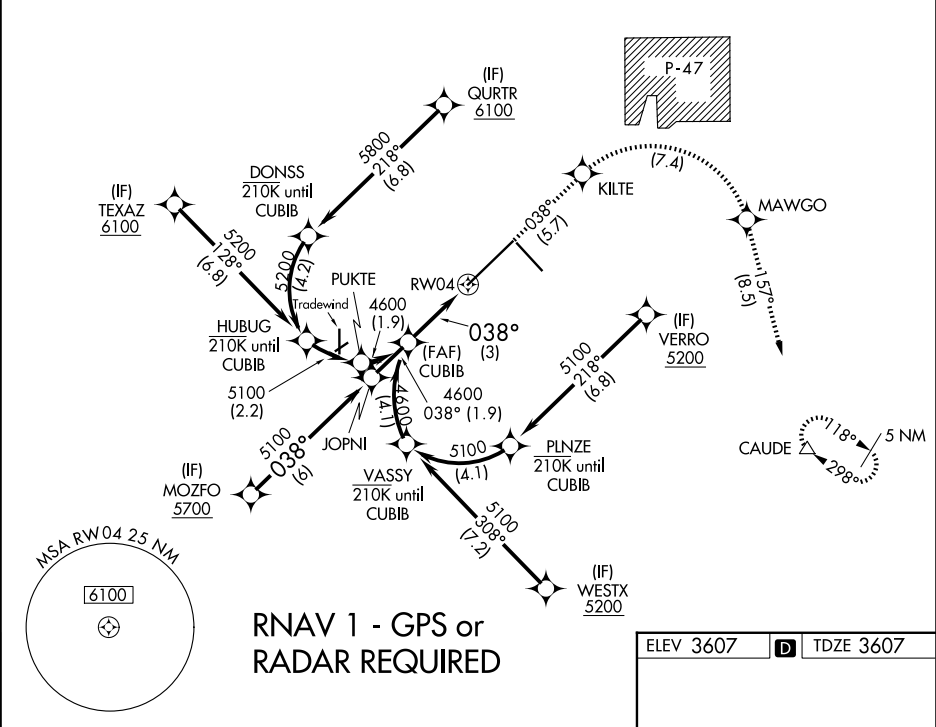
APP CRS	Rwy Ldg	13502
038°	TDZE	3607
	Apt Elev	3607

RNAV (RNP) Z RWY 4

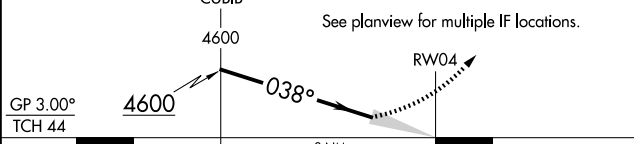
RICK HUSBAND AMARILLO INTL (AMA)

ASR For uncompensated Baro-VNAV systems, procedure NA below -14°C (7°F) or above 53°C (128°F). RF required. GPS required. For inop ALS, increase RNP 0.30 all Cats visibility to 1 3/8 SM.	MALSR 45 MISSED APPROACH: (Do not exceed 185K until MAWGO) Climb to 5400 on track 038° to KILTE, right turn to MAWGO, then track 157° to CAUDE and hold.
--	--

ATIS 118.85 350.3	AMARILLO APP CON★ 119.5 307.0	AMARILLO TOWER★ 118.3(CTAF) 257.9	GND CON 121.9 348.6	CLNC DEL 121.65 239.275	UNICOM 122.95
----------------------	----------------------------------	--------------------------------------	------------------------	----------------------------	------------------



VGSI and RNAV glidepath not coincident (VGSI Angle 3.00/TCH 61).	5400 ↑ tr 038°	KILTE	MAWGO	CAUDE
--	----------------------	-------	-------	-------



CATEGORY	A	B	C	D
RNP 0.12 DA		3969/40	362 (400-3/4)	
RNP 0.30 DA		4019/50	412 (500-1)	

AUTHORIZATION REQUIRED

