

APP CRS	Rwy Ldg	7901
309°	TDZE	3601
	Apt Elev	3607

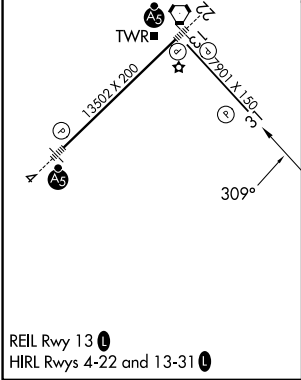
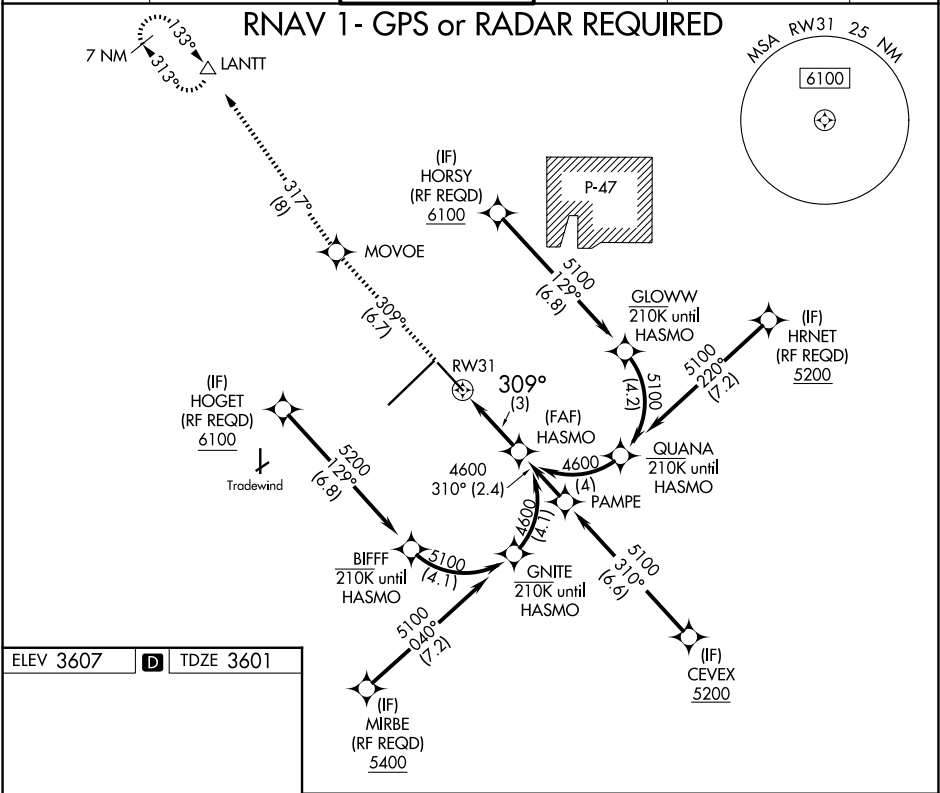
# RNAV (RNP) Z RWY 31

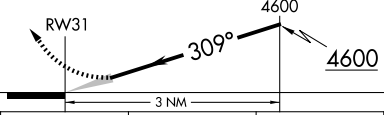
RICK HUSBAND AMARILLO INTL (AMA)

▼ For uncompensated Baro-VNAV systems, procedure NA below ASR -14°C (7°F) or above 51°C (124°F). GPS required.

MISSED APPROACH: Climb to 6200 on track 309° to MOVOE and track 317° to LANITT and hold.

ATIS	AMARILLO APP CON★	AMARILLO TOWER★	GND CON	CLNC DEL	UNICOM
118.85 350.3	119.5 307.0	118.3(CTAF) 257.9	121.9 348.6	121.65 239.275	122.95



See planview for multiple IF locations.				6200 ↑ tr 309°	MOVOE ✱ tr 317°	LANITT △
				HASMO 4600 4600 GP 3.00° TCH 52		
CATEGORY	A	B	C	D		
RNP 0.30 DA	3930-1½ 329 (400-1½)					
AUTHORIZATION REQUIRED						