

APP CRS	Rwy Ldg	13502
218°	TDZE	3606
	Apt Elev	3607

RNAV (RNP) Z RWY 22

RICK HUSBAND AMARILLO INTL (AMA)

▼

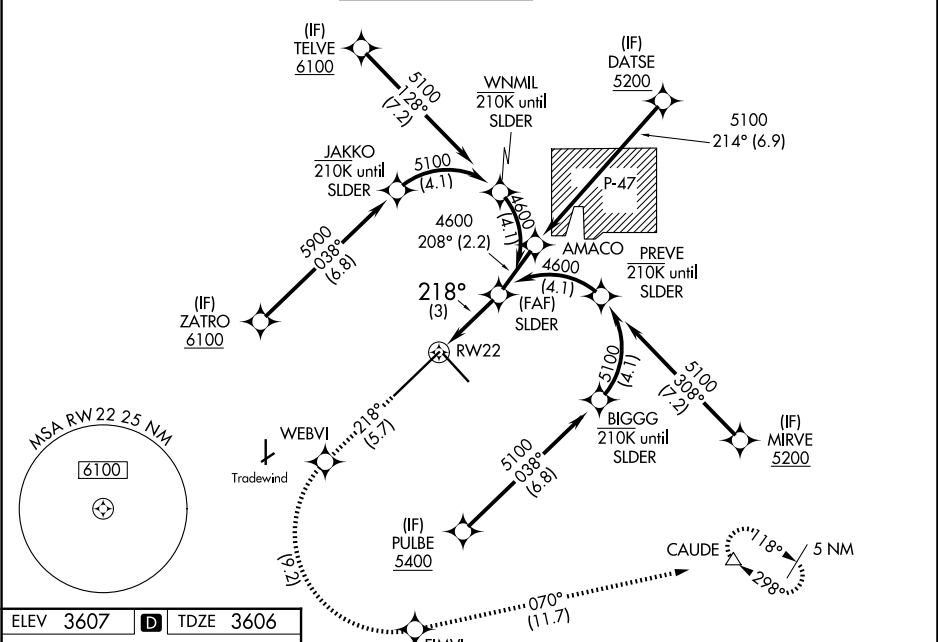
ASR

For uncompensated Baro-VNAV systems, procedure NA below -14°C (7°F) or above 52°C (125°F). RF required. GPS required. For inop ALS, increase RNP 0.14 all Cats visibility to ¾ SM and increase RNP 0.30 all Cats visibility to 1½ SM.

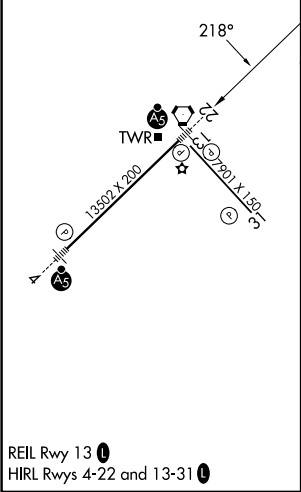
MALSR

MISSED APPROACH: (Do not exceed 185 K until FIMVI) Climb to 5400 on track 218° to WEBVI, left turn to FIMVI, then track 070° to CAUDE and hold.

ATIS	AMARILLO APP CON★	AMARILLO TOWER★	GND CON	CLNC DEL	UNICOM
118.85 350.3	119.5 307.0	118.3(CTAF) 257.9	121.9 348.6	121.65 239.275	122.95



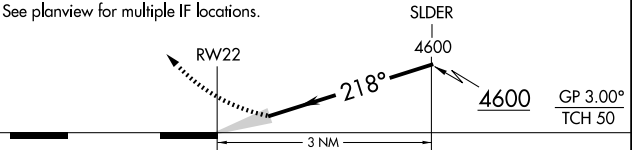
ELEV 3607	D	TDZE 3606
-----------	---	-----------



RNAV 1 - GPS or RADAR REQUIRED

VGSI and RNAV glidepath not coincident (VGSI Angle 3.00/TCH 77).	5400	WEBVI	FIMVI	CAUDE
	tr 218°			tr 070°

See planview for multiple IF locations.



CATEGORY	A	B	C	D
RNP 0.14 DA		3884-½	278 (300-½)	
RNP 0.30 DA		3958-¾	352 (400-¾)	

AUTHORIZATION REQUIRED

SC-2, 07 AUG 2025 to 04 SEP 2025

SC-2, 07 AUG 2025 to 04 SEP 2025