

HI-VOR or TACAN RWY 4

VORTAC PNH 116.6 Chan 113	APCH CRS 037°	Rwy Idg 13,502 TDZE 3607 Arpt Elev 3607
---	-------------------------	--

[USAF]

RICK HUSBAND AMARILLO INTL (KAMA)

DME required

▼ * When ALS inop, increase CAT D vis to 1¼ miles;
CAT E vis to 1½ miles.
** When ALS inop, increase CAT CD vis to 1½ miles;
CAT E vis to 1¾ miles.



MISSED APPROACH: Climbing right turn to 5000 on heading 090° and PNH VORTAC R-118 to CAUDE/PNH 13 DME and hold.

ATIS 118.85 350.3	AMARILLO APP CON 119.5 307.0	AMARILLO TOWER★ 118.3 (CTAF) 0 257.9	GND CON 121.9 348.6	CLNC DEL 121.65 239.275	ASR
-----------------------------	--	--	-------------------------------	-----------------------------------	-----

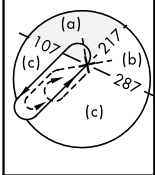
When local altimeter setting not received,
use Borger altimeter setting.

PANHANDLE
116.6 PNH
Chan 113

4075

4914
5049
5047

P47



4189

TRADEWIND

3802

CIPED
PNH 4.8

JIRTU
PNH 7.4

3975

5300

3974

KUYEG
PNH 15

7000

7000

037°

037°

037°

037°

037°

037°

037°

037°

037°

037°

037°

037°

037°

037°

037°

037°

037°

037°

037°

037°

037°

037°

037°

037°

037°

037°

037°

037°

037°

037°

037°

037°

037°

037°

037°

037°

037°

037°

037°

037°

TEXICO
112.2 TXO
Chan 59

FL180

047°

(38)

R-217

037°

037°

037°

037°

037°

037°

037°

037°

037°

037°

037°

037°

037°

037°

037°

037°

037°

037°

037°

037°

037°

037°

037°

037°

037°

037°

037°

037°

037°

037°

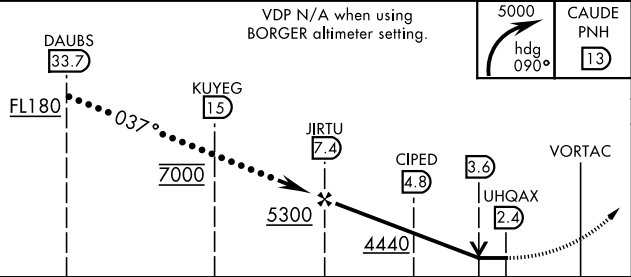
037°

037°

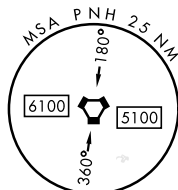
037°

(IAF)
DAUBS
PNH 33.7
FL180

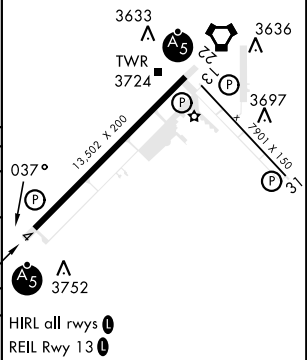
EMERG SAFE ALT 100 NM 7500



CATEGORY	C	D	E
S-4 *	4040/40 433 (500-¾)	4040/50 433 (500-1)	
CIRCLING	4240-1¾ 633 (700-1¾)	4280-2¼ 673 (700-2¼)	4460-3 853 (900-3)
BORGER ALTIMETER SETTING			
S-4 **	4200-1¼	593	(600-1¼)
CIRCLING	4400-2¼ 793 (900-2¼)	4440-2¾ 833 (900-2¾)	4620-3 1013 (1100-3)



ELEV	3607	TDZE	3607
------	------	------	------



HI-VOR or TACAN RWY 4