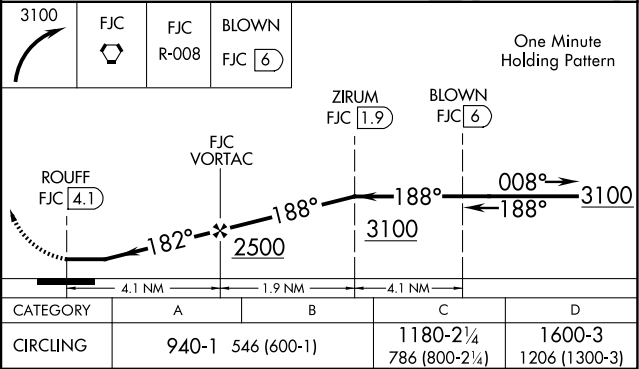
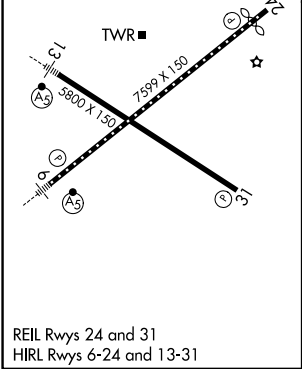
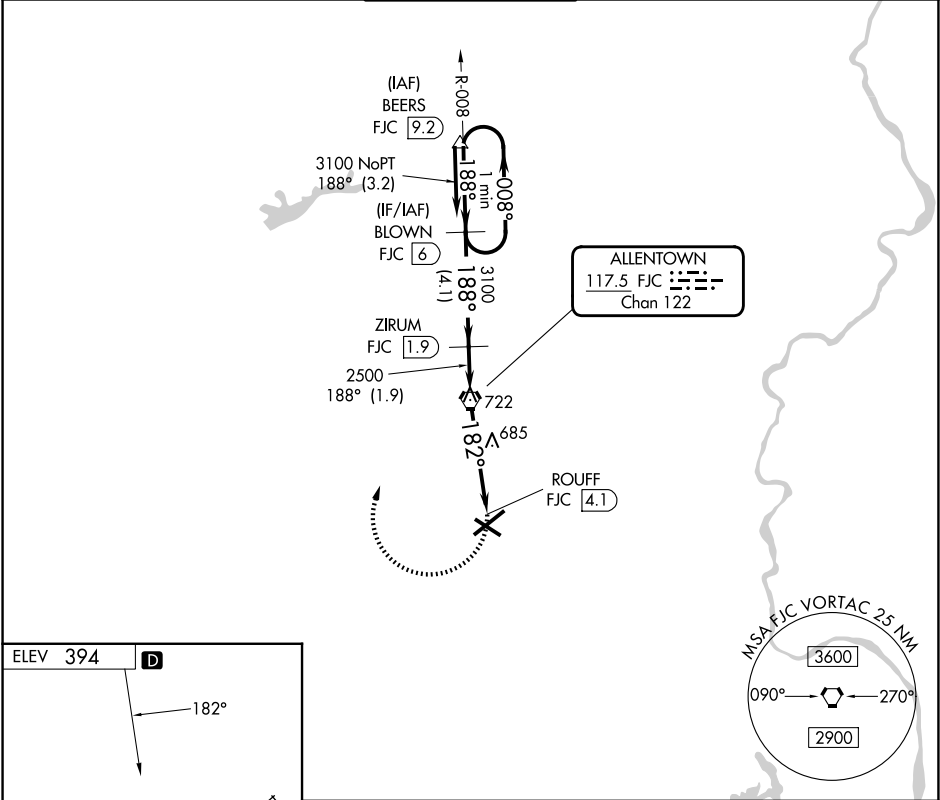


<div><div>▼</div><div>▲ NA</div></div>		MISSED APPROACH: Climbing right turn to 3100 direct FJC VORTAC then via FJC R-008 to BLOWN/6 DME and hold.		
ATIS 126.975	ALLENTOWN APP CON 119.65 124.45 351.8	ALLENTOWN TOWER 120.5 257.95	GND CON 121.9 257.95	CLNC DEL 124.05 257.95



NE-4, 07 AUG 2025 to 04 SEP 2025

NE-4, 07 AUG 2025 to 04 SEP 2025