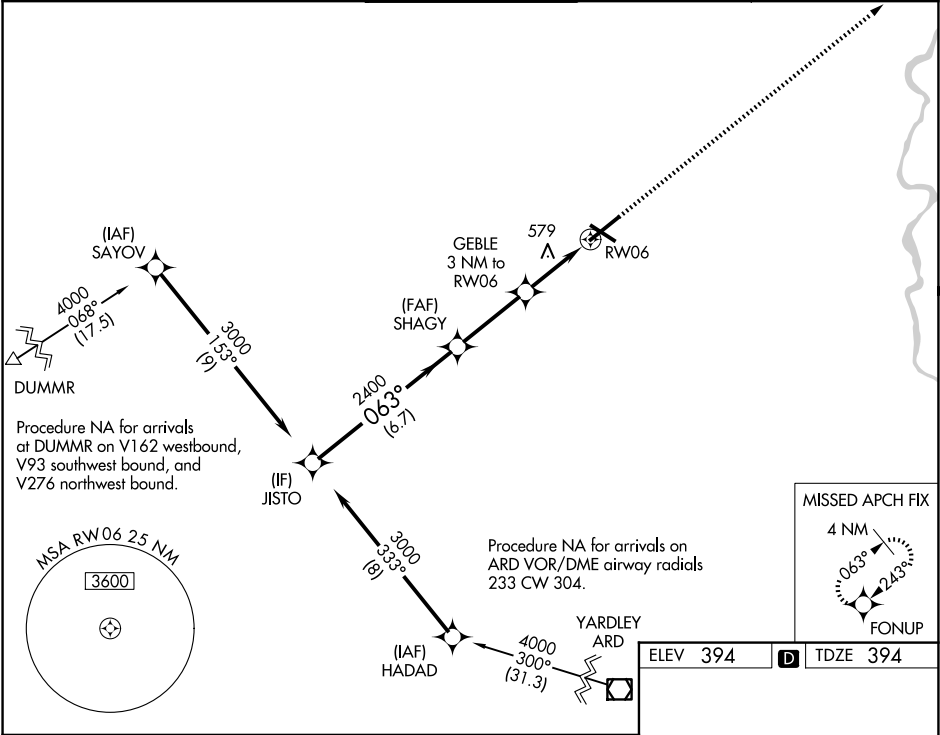


| | | |
|--|------------------------|---|
| WAAS CH 69432 W06A | APP CRS 063° | Rwy Ldg 7599 TDZE 394 Apt Elev 394 |
|--|------------------------|---|

RNAV (GPS) RWY 6
LEHIGH VALLEY INTL (ABE)

| | | |
|--|-------|---|
| RNP APCH - GPS. | MALSR | MISSED APPROACH: Climb to 3000 direct FONUP and hold. |
| ▼ ▲ For uncompensated Baro-VNAV systems, LNAV/VNAV NA below -8°C or above 54°C. For inop ALS, increase LNAV Cat C/D visibility to 1½ SM. **RVR 1800 authorized with use of FD or AP or HUD to DA. | | |

| | | | | |
|------------------------|---|--|--------------------------------|----------------------------------|
| ATIS 126.975 | ALLENTOWN APP CON 119.65 124.45 351.8 | ALLENTOWN TOWER 120.5 257.95 | GND CON 121.9 257.95 | CLNC DEL 124.05 257.95 |
|------------------------|---|--|--------------------------------|----------------------------------|



| | | | | |
|---|--------------------|---|---|---|
| VGSI and RNAV glidepath not coincident (VGSI Angle 3.00/TCH 74). | | | | |
| JISTO 3000 063° SHAGY 2400 GEBLE 3 NM to RWY 06 1.3 NM to RWY 06 RWY 06 | | | | |
| GP 3.00° TCH 56 6.7 NM 3.1 NM 1.7 NM 1.3 | | | | |
| CATEGORY | A | B | C | D |
| LPV DA ** | 594/24 200 (200-½) | | | |
| LNAV/ DA VNAV | 644/24 250 (300-½) | | | |
| LNAV MDA | 840/24 446 (500-½) | | 840/45 446 (500-¾) | |
| CIRCLING | 900-1 506 (600-1) | | 1180-2¼ 786 (800-2¼) 1600-3 1206 (1300-3) | |

