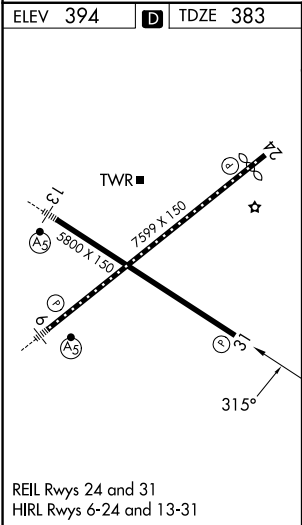
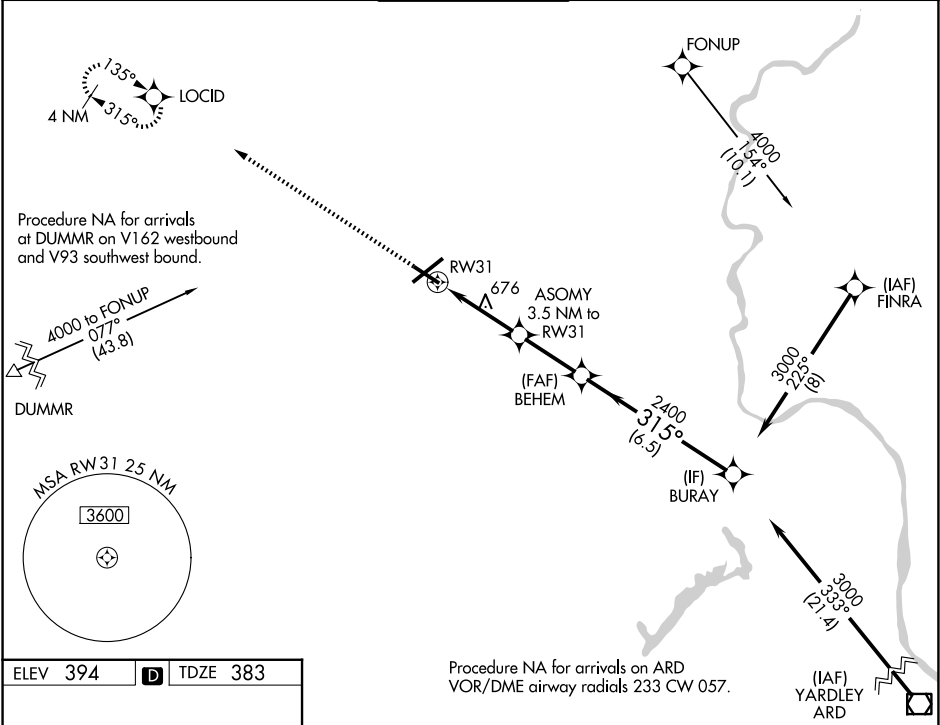


RNP APCH - GPS				MISSED APPROACH: Climb to 3000 direct LOCID and hold.	
For uncompensated Baro-VNAV systems, LNAV/VNAV NA below -8°C or above 54°C. Rwy 31 helicopter visibility reduction below ¾ SM NA.					
ATIS 126.975	ALLENTOWN APP CON 119.65 124.45 351.8		ALLENTOWN TOWER 120.5 257.95	GND CON 121.9 257.95	CLNC DEL 124.05 257.95



3000	LOCID		BURAY	
	ASOMY 3.5 NM to RW31		BEHEM 2400	
RW31		1540	2400	3000
3.5 NM		2.7 NM	6.5 NM	GP 3.00° TCH 54
CATEGORY	A	B	C	D
LPV DA	633-¾ 250 (300-¾)			
LNAV/VNAV DA	758-1¼ 375 (400-1¼)			
LNAV MDA	940-1	557 (600-1)	940-1½	557 (600-1½)
CIRCLING	940-1	546 (600-1)	1180-2¼ 786 (800-2¼)	1600-3 1206 (1300-3)

NE-4, 07 AUG 2025 to 04 SEP 2025

NE-4, 07 AUG 2025 to 04 SEP 2025