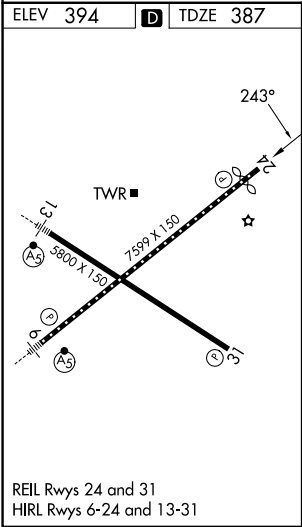
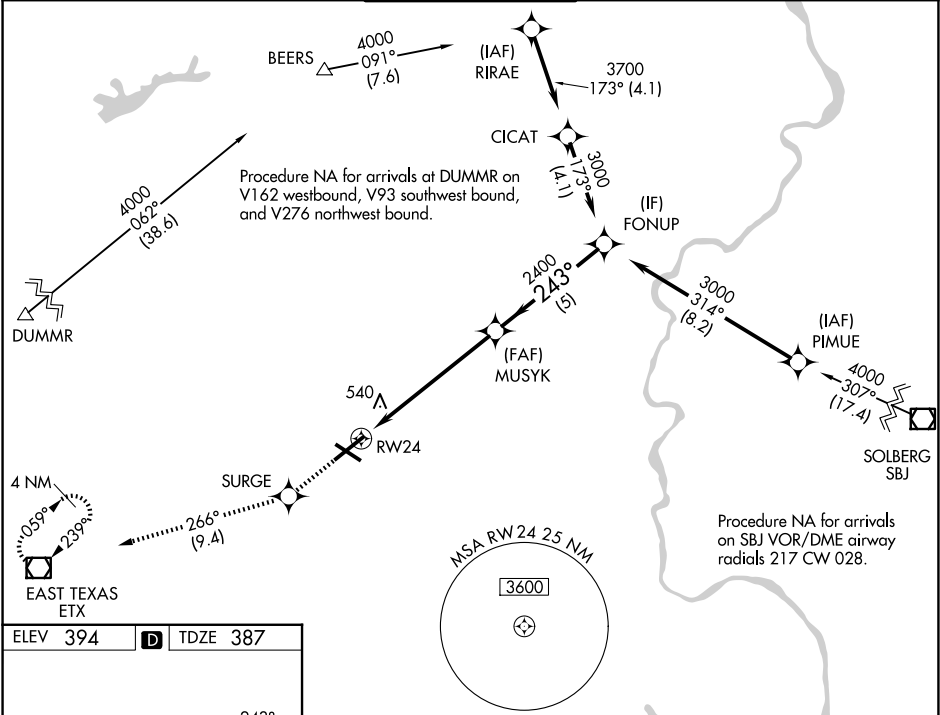


WAAS CH <b>40332</b> <b>W24A</b>	APP CRS <b>243°</b>	Rwy Ldg TDZE <b>387</b> Apt Elev <b>394</b>	<b>7089</b> <b>387</b> <b>394</b>
--	------------------------	---	---

RNAV (GPS) RWY 24

LEHIGH VALLEY INTL (ABE)

RNP APCH - GPS.		MISSED APPROACH: Climb to 3000 direct SURGE and on track 266° to ETX VOR/DME and hold.		
For uncompensated Baro-VNAV systems, LNAV/VNAV NA below -8°C or above 54°C.				
ATIS <b>126.975</b>	ALLENTOWN APP CON <b>119.65 124.45 351.8</b>	ALLENTOWN TOWER <b>120.5 257.95</b>	GND CON <b>121.9 257.95</b>	CLNC DEL <b>124.05 257.95</b>



3000	SURGE	tr 266°	ETX	VGSI and RNAV glidepath not coincident (VGSI Angle 3.00/TCH 71).	
				FONUP	3000
				MUSYK	2400
					GP 3.00° TCH 55
CATEGORY	A	B	C	D	
LPV DA	587/40 200 (200-3/4)				
LNAV/VNAV DA	783-1 1/4 396 (400-1 1/4)				
LNAV MDA	860/55 473 (500-1)		860-1 3/8 473 (500-1 3/8)		
CIRCLING	900-1 506 (600-1)		1180-2 1/4 786 (800-2 1/4)		1600-3 1206 (1300-3)

NE-4, 07 AUG 2025 to 04 SEP 2025

NE-4, 07 AUG 2025 to 04 SEP 2025