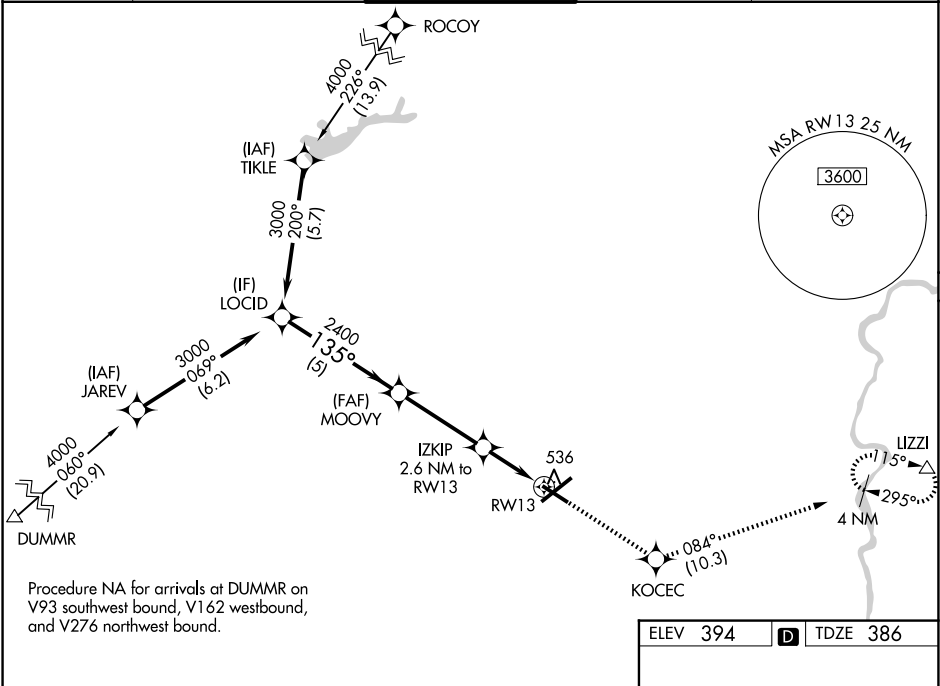


WAAS CH 82532 W13A	APP CRS 135°	Rwy Ldg TDZE 386 Apt Elev 394
--	------------------------	---

RNAV (GPS) RWY 13

LEHIGH VALLEY INTL (ABE)

RNP APCH - GPS.		MALSR	MISSED APPROACH: Climb to 3000 direct KOCEC and on track 084° to LIZZI and hold.	
▼ For uncompensated Baro-VNAV systems, LNAV/VNAV NA below -16°C or above 54°C. For inop ALS, increase LNAV Cat C/D visibility to 1½ SM.		AS		
ATIS 126.975	ALLENTOWN APP CON 119.65 124.45 351.8	ALLENTOWN TOWER 120.5 257.95	GND CON 121.9 257.95	CLNC DEL 124.05 257.95



LOCID		3000		MOOVY		IZKIP		RW13		LIZZI	
3000		135°		2400		2.6 NM to RW13		1.1 NM to RW13		tr 084°	
GP 3.00°		TCH 56		1260							
		5 NM		3.6 NM		1.5 NM		1.1 NM			
CATEGORY	A	B	C	D							
LPV DA	586-½		200 (200-½)								
LNAV/VNAV DA	700-½		314 (400-½)								
LNAV MDA	800-½ 414 (500-½)		800-¾ 414 (500-¾)								
CIRCLING	900-1 506 (600-1)		1180-2¼ 786 (800-2¼)		1600-3 1206 (1300-3)						

