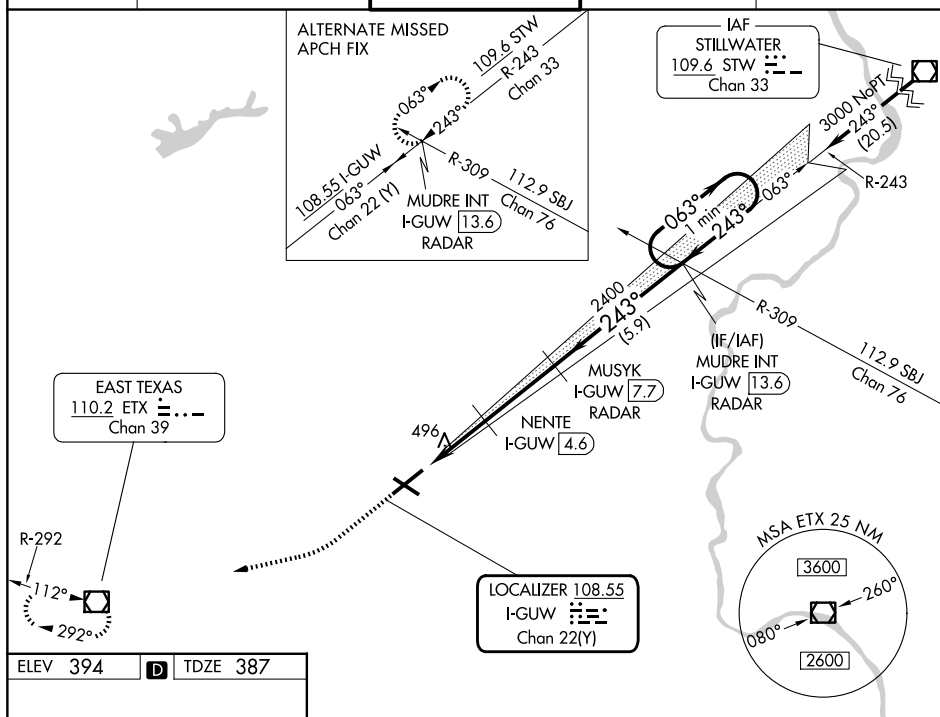


LOC/DME I-GUW 108.55 Chan 22 (Y)	APP CRS 243°	Rwy Ldg 7089 TDZE 387 Apt Elev 394
--	------------------------	---

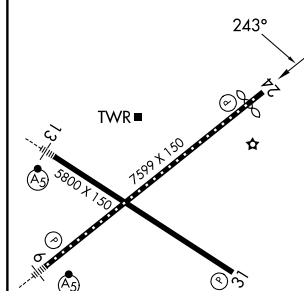
ILS or LOC/DME RWY 24
LEHIGH VALLEY INTL (ABE)

MISSED APPROACH: Climb to 900 then climbing right turn to 3000 direct ETX VOR/DME and hold.

ATIS 126.975	ALLETOWN APP CON 119.65 124.45 351.8	ALLETOWN TOWER 120.5 257.95	GND CON 121.9 257.95	CLNC DEL 124.05 257.95
-----------------	---	--------------------------------	-------------------------	---------------------------



ELEV 394	D	TDZE 387
----------	----------	----------



REIL Rwy 24 and 31
HIRL Rwy 6-24 and 13-31

40°39'N-75°26'W

LEHIGH VALLEY INTL (ABE)

ILS or LOC/DME RWY 24

NE-4, 07 AUG 2025 to 04 SEP 2025

NE-4, 07 AUG 2025 to 04 SEP 2025

Diagram illustrating the VGS and ILS glidepath not coincident (VGS Angle 3.00/TCH 71).

Legend:

- 900 ↑
- 3000 ↗
- ETX

One Minute Holding Pattern

* LOC only.

Diagram details:

- MUSYK I-GUW 7.7
- MUDRE INT I-GUW 13.6 RADAR
- NENTE I-GUW 4.6
- I-GUW 2.7
- I-GUW 1.6
- 2400
- 243°
- 063° →
- 3000
- GS 3.00° TCH 55
- Distances: 1.1 NM, 1.9 NM, 3.2 NM, 5.9 NM
- Altitudes: 1380, 2400

CATEGORY	A	B	C	D
S-ILS 24	587/40 200 (200-¾)			
S-LOC 24	800/55 413 (500-1)	800/60 413 (500-1¼)		
CIRCLING	900-1 506 (600-1)	1180-2¼ (800-2¼)	1600-3 (1206 (1300-3))	