

LOC I-ABE	APP CRS	Rwy Ldg	7599
110.7	063°	TDZE	394
		Apt Elev	394

ILS RWY 6 (SA CAT I & II)

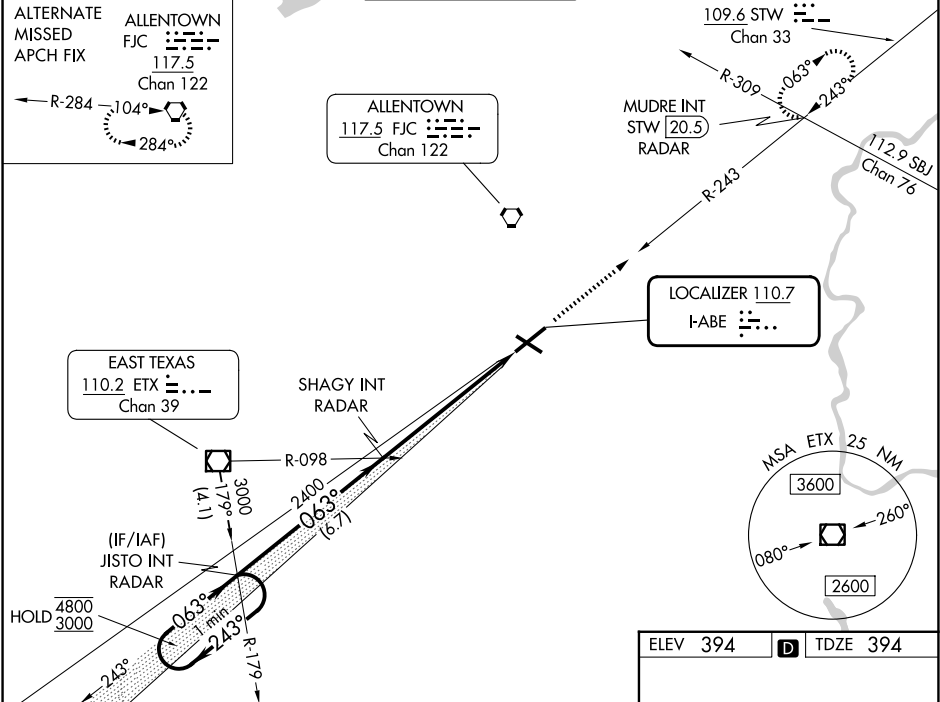
LEHIGH VALLEY INTL (ABE)

SA CAT I: Requires specific OPSPEC, MSPEC, or LOA approval and use of HUD to DH. SA CAT II: Reduced lighting: Requires specific OPSPEC, MSPEC, or LOA approval and use of autoland or HUD to touchdown.

MALSR

MISSED APPROACH: Climb to 3000 on heading 063° and STW R-243 to MUDRE INT/STW 20.5 DME/ RADAR and hold.

ATIS	ALLENTOWN APP CON	ALLENTOWN TOWER	GND CON	CLNC DEL
126.975	119.65 124.45 351.8	120.5 257.95	121.9 257.95	124.05 257.95



VGSI and descent angles not coincident (VGSI Angle 3.00/TCH 74).

One Minute Holding Pattern

JISTO INT RADAR

SHAGY INT RADAR

3000

hdg 063°

STW R-243

MUDRE INT

4800

3000

243°

063°

063°

2400

6.7 NM

6.1 NM

1221

GS 3.00°

TCH 57

CATEGORY	A	B	C	D
S-ILS 6	SA CAT I	RA 154/14	150 DA 544	
S-ILS 6	SA CAT II	RA 114/12	100 DA 494	

SA CATEGORY I & II ILS - SPECIAL AIRCREW & AIRCRAFT CERTIFICATION REQUIRED

ELEV 394 TDZE 394

TWR

13

5800 X 150

7599 X 150

REIL Rwy 24 and 31

HIRL Rwy 6-24 and 13-31