

WAAS CH 61007 W31A	APP CRS 315°	Rwy Ldg 5099 TDZE 1423 Apt Elev 1425
--	------------------------	---

RNAV (GPS) RWY 31

ALEXANDRIA RGNL/CHANDLER FLD (AXN)

⚠ Inoperative table does not apply to LPV & LNAV/VNAV CATs A/B/C and LNAV CAT C. For uncompensated Baro-VNAV systems, LNAV/VNAV NA below -17°C (2°F) or above 46°C (114°F). DME/DME RNP -0.3 NA. VDP and Baro-VNAV NA when using Glenwood altimeter setting. When local altimeter setting not received, use Glenwood altimeter setting and increase all DAs/MDAs 40 feet and increase LPV and LNAV/VNAV visibilities $\frac{1}{4}$ mile all Cats.

ODALS



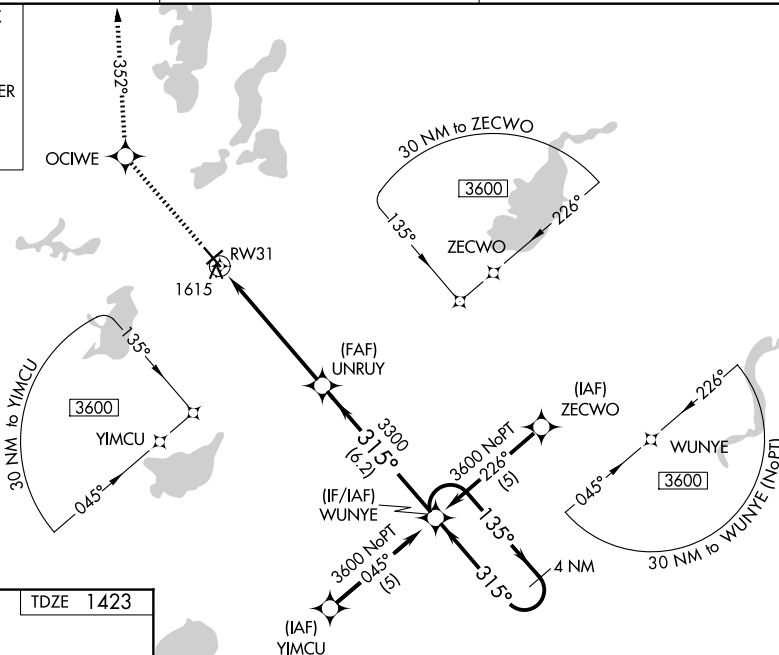
MISSED APPROACH: Climb to 3500 direct
OCIWE and via 352° track to TILER and
hold.

ASOS
118.375

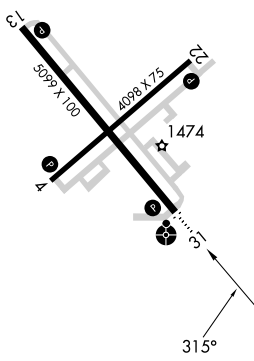
MINNEAPOLIS CENTER
126.1 269.2

UNICOM
123.0 (CTAF) **L**

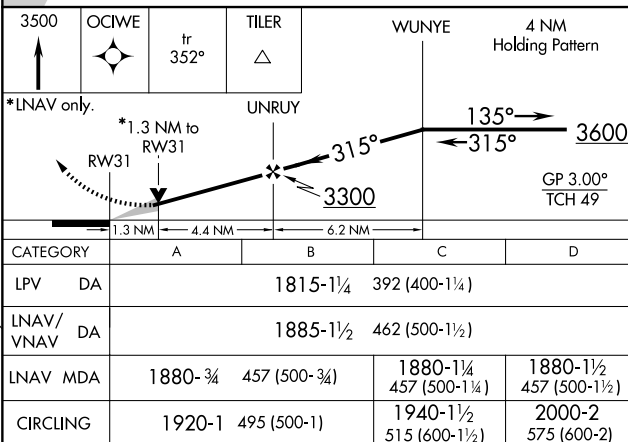
MISSED APCH FIX



ELEV 1425

 TDZE | 1 |

REIL Rwy 4, 13, and 22 **L**
MIRL Rwy 4-22 and 13-31 **L**



ALEXANDRIA, MINNESOTA

Amdt 1A 20MAY21

ALEXANDRIA RGNL/CHANDLER FLD (AXN)

45°52'N-95°24'W

RNAV (GPS) RWY 31