

WAAS CH 48917 W22A	APP CRS 225°	Rwy Ldg TDZE Apt Elev	4098 1424 1425
--	------------------------	-----------------------------	---

RNAV (GPS) RWY 22

ALEXANDRIA RGNL/CHANDLER FLD (AXN)

RNP APCH.

▼

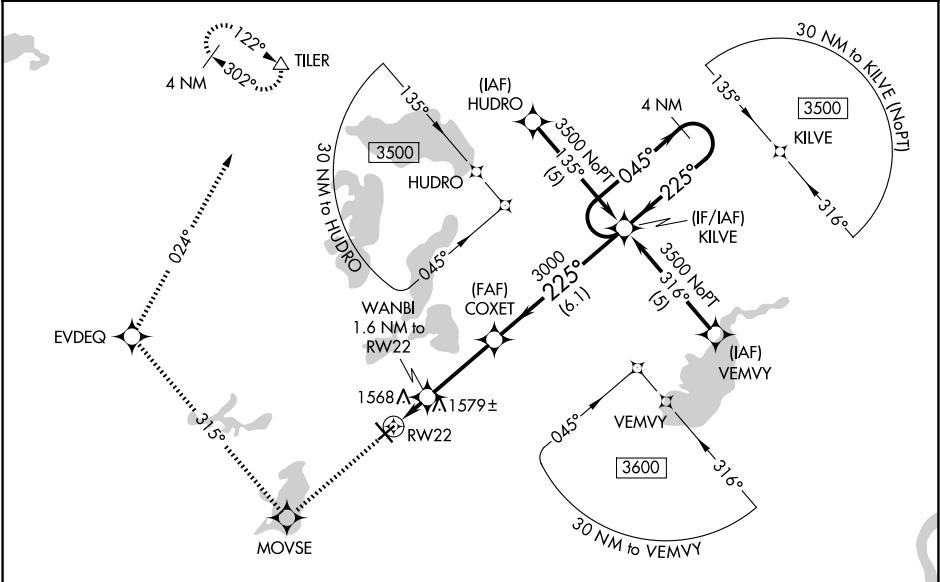
Baro-VNAV NA when using Glenwood altimeter setting. For uncompensated Baro-VNAV systems, LNAV/VNAV NA below -17°C or above 46°C.

⚠

When local altimeter setting not received, use Glenwood altimeter setting and increase all DA 37 feet and all MDA 40 feet, increase LNAV/VNAV all Cats and LNAV Cat D visibility ¼ mile. Rwy 22 helicopter visibility reduction below ¾ SM NA.

MISSED APPROACH: Climb to 3500 direct MOVSE and right turn on track 315° to EVDEQ and on track 024° to TILER and hold.

ASOS 118.375	MINNEAPOLIS CENTER 126.1 269.2	UNICOM 123.0 (CTAF) 0
------------------------	--	---------------------------------



ELEV 1425

TDZE 1424

3500

MOVSE

EVDEQ

tr 315°

tr 024°

TILER

△

*LNAV only.

WANJI 1.6 NM to RW22

COXET

3000

225°

3000

1980*

1.6 NM

3.2 NM

6.1 NM

KILVE

4 NM Holding Pattern

045°

225°

3500

GP 3.00°

TCH 50

CATEGORY	A	B	C	D
LPV	DA	1677-1	253 (300-1)	
LNAV/VNAV	DA	1880-1½	456 (500-1½)	
LNAV	MDA	1840-1	416 (500-1)	1840-1¼ 416 (500-1¼)