

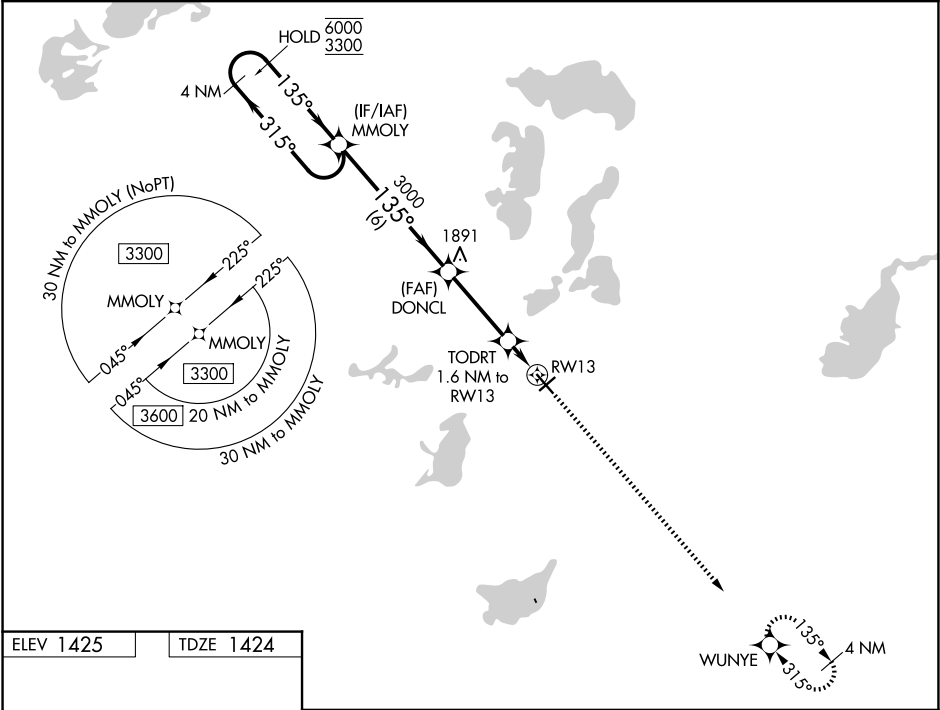
WAAS CH 50245 W13A	APP CRS 135°	Rwy Ldg TDZE Apt Elev	5099 1424 1425
----------------------------------------	------------------------	-----------------------------	-------------------------------------------

RNAV (GPS) RWY 13

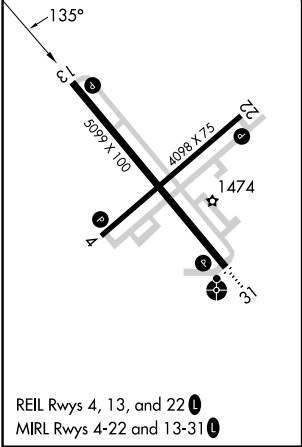
ALEXANDRIA RGNL/CHANDLER FLD (AXN)

RNP APCH - GPS.	MISSED APPROACH: Climb to 3600 direct WUNYE and hold.
<div><div></div><div></div></div> <div>For uncompensated Baro-VNAV systems, LNAV/VNAV NA below -24°C or above 54°C.</div>	

ASOS 118.375	MINNEAPOLIS CENTER 126.1 269.2	UNICOM 123.0 (CTAF) 0
------------------------	------------------------------------------	---------------------------------



ELEV 1425	TDZE 1424
-----------	-----------



4 NM Holding Pattern				VGSi and RNAV glidepath not coincident (VGSi Angle 3.00/TCH 34).		3600	WUNYE
6000 ← 315°				135° →		3000	
GP 3.00°				TCH 40		1960	
				6 NM		3.3 NM	1.6 NM
CATEGORY	A	B	C	D			
LPV DA	1674-1			250 (300-1)			
LNAV/VNAV DA	1721-1			297 (300-1)			
LNAV MDA	1800-1			376 (400-1)			
CIRCLING	1900-1	475 (500-1)	1940-1½ 515 (600-1½)	2000-2 575 (600-2)			