

LOC I-EEZ

110.5

APP CRS

315°

Rwy Ldg

5099

TDZE

1423

Apt Elev

1425

NA

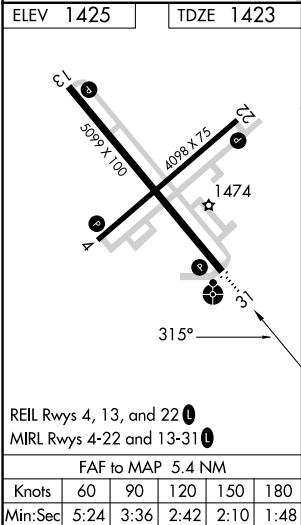
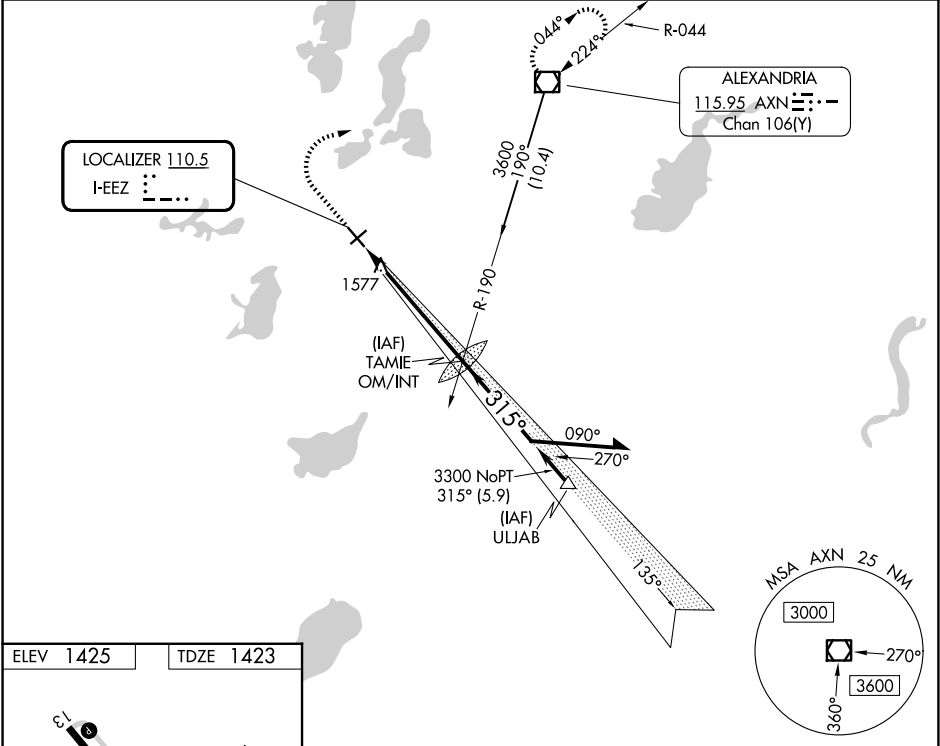
Inoperative table does not apply to S-LOC 31 Category C.

ODALS

MISSED APPROACH:

Climb to 2500 then climbing right turn to 3500 direct AXN VOR/DME and hold.

ASOS 118.375	MINNEAPOLIS CENTER 126.1 269.2	UNICOM 123.0 (CTAF)
-----------------	-----------------------------------	------------------------



	2500	3500	AXN	
			TAMIE OM/INT	Remain within 10 NM
			3210	135°
				3600
			3300	315°
				GS 3.00°
				TCH 49
			5.4 NM	
CATEGORY	A	B	C	D
S-ILS 31	1673-3/4 250 (300-3/4)			
S-LOC 31	1840-3/4 417 (500-3/4)		1840-1/4 417 (500-1/4)	
CIRCLING	1920-1 495 (500-1)		1940-1 1/2 515 (600-1 1/2)	
			2000-2 575 (600-2)	

NC-1, 07 AUG 2025 to 04 SEP 2025

NC-1, 07 AUG 2025 to 04 SEP 2025