

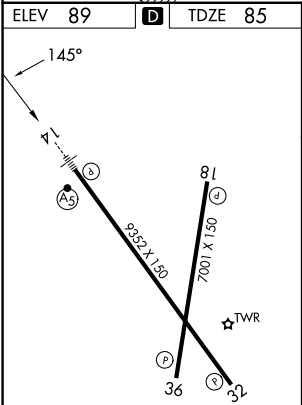
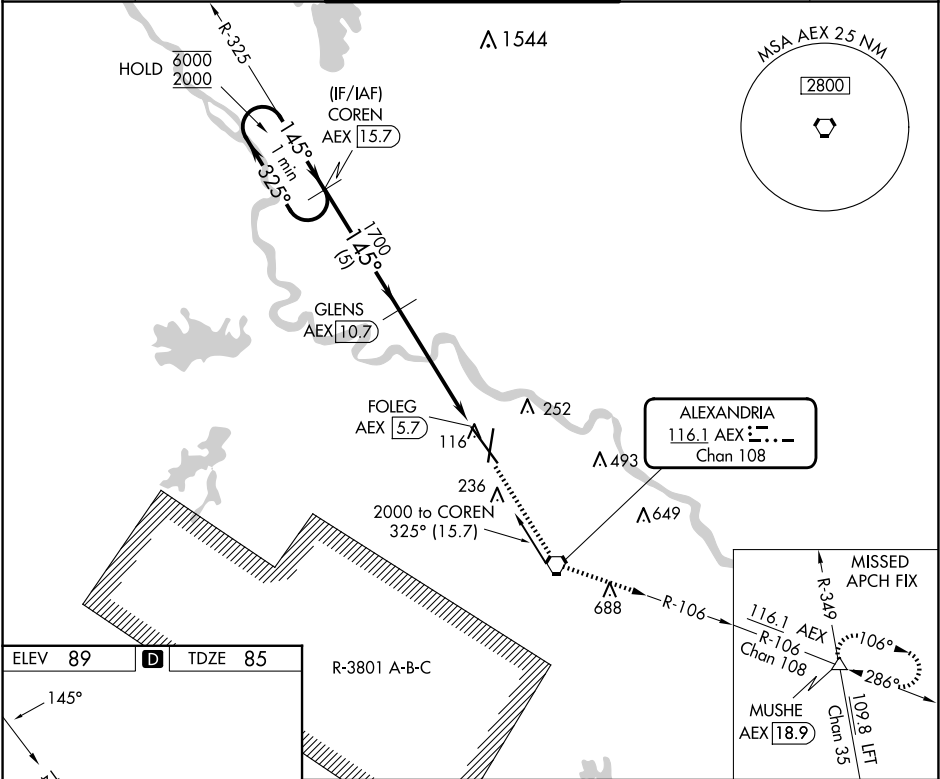
VORTAC AEX	APP CRS	Rwy Ldg	9352
<b>116.1</b>	<b>145°</b>	TDZE	<b>85</b>
Chan <b>108</b>		Apt Elev	<b>89</b>

VOR RWY 14

ALEXANDRIA INTL (AEX)

DME required.	MALSR	MISSED APPROACH: Climb to 4000 direct AEX VORTAC, then on AEX VORTAC R-106 to MUSHE INT and hold.
▼ When R-3801B active, RADAR required.		
▲ Rwy 14 helicopter visibility reduction below ¾ SM NA.		

ASOS	POLK APP CON	ALEXANDRIA TOWER	GND CON	CLNC DEL
<b>123.975</b>	<b>125.4 254.8</b>	<b>127.35 (CTAF) 269.2</b>	<b>121.9 372.0</b>	<b>121.9</b>



VGSI and descent angles not coincident (VGSI Angle 3.00/TCH 71).		4000	AEX	AEX R-106	MUSHE
One Minute Holding Pattern					
COREN AEX 15.7					
GLENS AEX 10.7					
FOLEG AEX 5.7					
AEX 6.7					
TCH 55					
5 NM					
4 NM					
1 NM					
CATEGORY	A	B	C	D	
S-14	500/40	415 (500-¾)		500/55	415 (500-1)
CIRCLING	540-1 451 (500-1)	560-1 471 (500-1)	700-1¾ 611 (700-1¾)	860-2½ 771 (800-2½)	

SC-4, 07 AUG 2025 to 04 SEP 2025

SC-4, 07 AUG 2025 to 04 SEP 2025