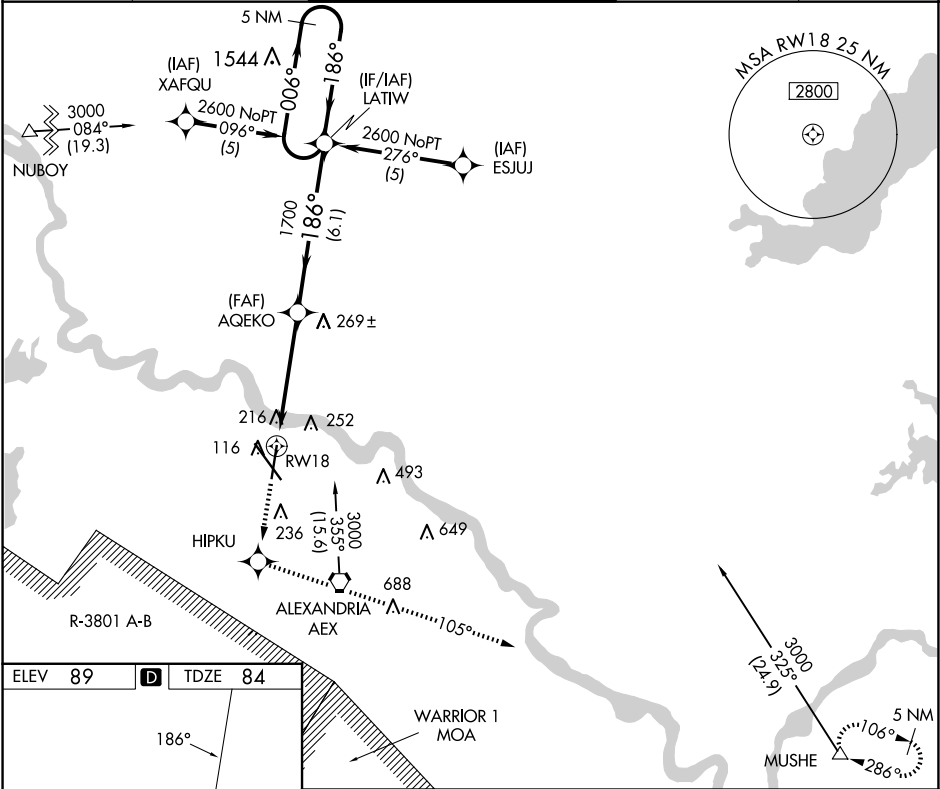


WAAS CH 61200 W18A	APP CRS 186°	Rwy Ldg 7001 TDZE 84 Apt Elev 89	RNAV (GPS) RWY 18 ALEXANDRIA INTL (AEX)
--	------------------------	---	---

<div><div>▼</div><div>DME/DME RNP-0.3 NA. Radar required when R-3801 A-B in use. For uncompensated Baro-VNAV systems, LNAV/VNAV NA below -1.5°C (5°F) or above 48°C (119°F). Visibility reduction by helicopters NA.</div></div>	<div><div>⚠</div><div>MISSED APPROACH: Climb to 4000 direct HIPKU and via 105° track to MUSHE and hold.</div></div>
--	---

ASOS 123.975	POLK APP CON 125.4 254.8	ALEXANDRIA TOWER 127.35 (CTAF) 269.2	GND CON 121.9 372.0	CLNC DEL 121.9
------------------------	------------------------------------	--	-------------------------------	--------------------------



4000	HIPKU	tr 105°	MUSHE	5 NM Holding Pattern
*LNAV only.		*1.2 NM to RW18	AQEKO	LATIW
RW18		186°	1700	006° → 2600 ← 186°
		GP 3.00° TCH 55°		
		VGSI and RNAV glidepath not coincident (VGSI Angle 3.00/TCH 79)		
1.2		3.6 NM	6.1 NM	
CATEGORY	A	B	C	D
LPV DA	395-1 311 (400-1)			
LNAV/VNAV DA	539-1½ 455 (500-1½)			
LNAV MDA	520-1	436 (500-1)	520-1¼ 436 (500-1¼)	520-1½ 436 (500-1½)
CIRCLING	540-1 451 (500-1)	560-1 471 (500-1)	700-1¾ 611 (700-1¾)	860-2½ 771 (800-2½)

TDZL Rwy 14

REIL Rwys 18, 32 and 36

HIRL Rwys 18-36 and 14-32