

VORTAC ABQ	APP CRS	Rwy Ldg
<b>113.2</b>	<b>077°</b>	<b>12793</b>
Chan <b>79</b>		<b>5320</b>
		<b>5355</b>

VOR RWY 8  
ALBUQUERQUE INTL SUNPORT (ABQ)

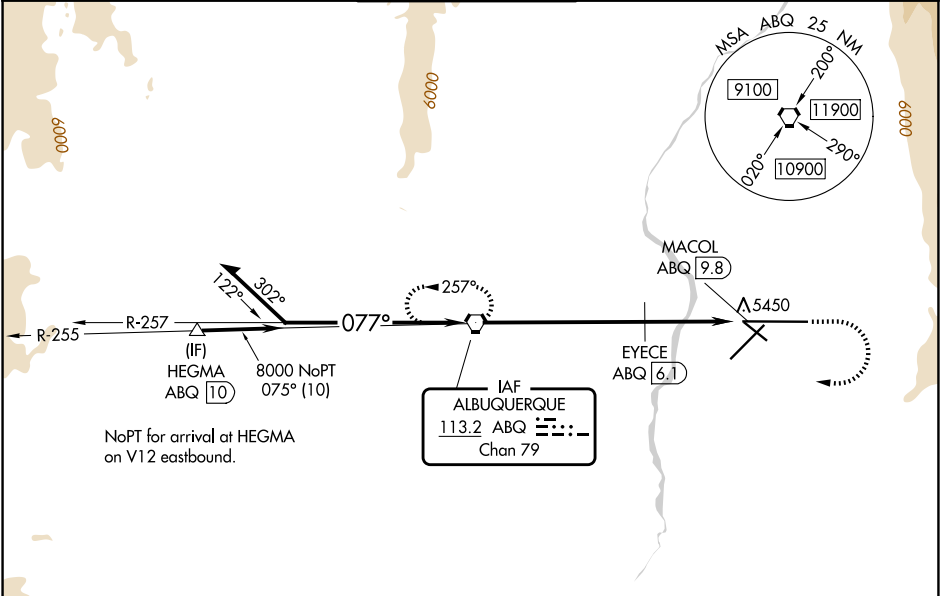
**▲** EYECE FIX MINIMUMS: For inop ALS, increase S-8 Cat C/D/E visibility to RVR 5500.  
**ASR** For inop ALS, increase S-8 Cat E visibility to 3 SM.  
Circling Cat E NA southeast of Rwy 3-21 and northeast of Rwy 12-30.

**MALSR**



MISSED APPROACH: Climb to 5800 then climbing right turn to 8000 direct ABQ VORTAC and hold.

D-ATIS	ALBUQUERQUE APP CON	ALBUQUERQUE TOWER	GND CON	CLNC DEL	CPDLC
<b>118.0 257.7</b>	<b>123.9 354.1</b>	<b>120.3 351.9</b>	<b>121.9 348.6</b>	<b>119.2 259.3</b>	



ELEV 5355		D TDZE 5320	
Remain within 15 NM		ABQ VORTAC	
8200		5800 8000 ABQ	
257°		EYECE ABQ 6.1	
077°		ABQ 8.7	
8000		MACOL ABQ 9.8	
6380		6.1 NM 2.6 NM 1.1 NM	
CATEGORY	A	B	C D E
S-8	6380/40 1060 (1100-¾)	6380/55 1060 (1100-1)	6380-2½ 1060 (1100-2½)
CIRCLING	6380-1¼ 1025 (1100-1¼)	6380-1½ 1025 (1100-1½)	6380-3 1025 (1100-3) 6460-3 1105 (1200-3) 7460-3 2105 (2200-3)
EYECE FIX MINIMUMS			
S-8	5700/24	380 (400-½)	5700/40 380 (400-¾)
CIRCLING	5840-1 485 (500-1)	5920-1 565 (600-1)	5940-1½ 585 (600-1½) 6460-3 1105 (1200-3) 7460-3 2105 (2200-3)
MIRL Rwy 12-30 TDZ/CL Rwys 3 and 8 HIRL Rwys 3-21 and 8-26 REIL Rwys 21, 26, and 30			
FAF to MAP 9.8 NM			
Knots		60 90 120 150 180	
Min:Sec		9:48 6:32 4:54 3:55 3:16	

SW-1, 07 AUG 2025 to 04 SEP 2025

SW-1, 07 AUG 2025 to 04 SEP 2025