

APP CRS
259°

Rwy Ldg
TDZE
13793
5355

Apt Elev
5355

RNAV (RNP) Z RWY 26

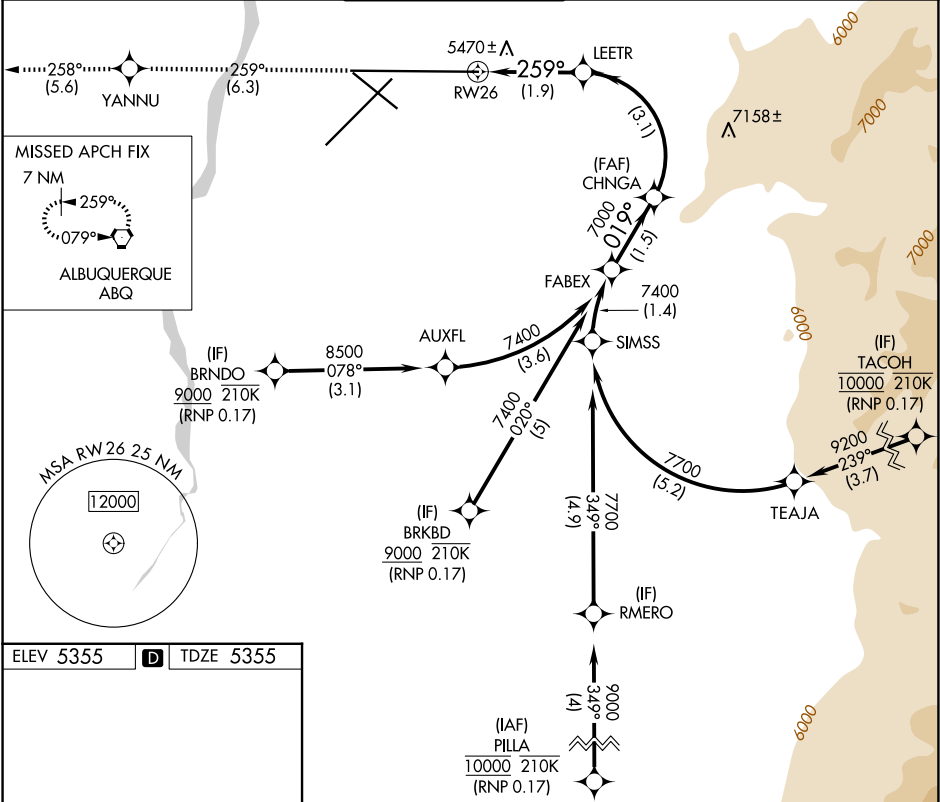
ALBUQUERQUE INTL SUNPORT (ABQ)

RNP AR APCH, RF required.

▼ For uncompensated Baro-VNAV systems, procedure NA ASR below -13°C or above 48°C.

MISSED APPROACH: Climb to 8000 on track 259° to YANNU and on track 258° to ABQ VORTAC and hold.

D-ATIS	ALBUQUERQUE APP CON	ALBUQUERQUE TOWER	GND CON	CLNC DEL	CPDLC
118.0 257.7	123.9 354.1	120.3 351.9	121.9 348.6	119.2 259.3	



ELEV 5355

D

TDZE 5355

8000

YANNU

tr 259°

tr 258°

ABQ

VGSI and RNAV glidepath not coincident (VGSI Angle 3.00/TCH 83).

See planview for multiple IF locations.

LEETR

CHNGA

FABEX

6007

7000

7000

019°

7400

GP 3.00° TCH 50

1.9 NM

3.1 NM

1.5 NM

CATEGORY	A	B	C	D
RNP 0.17 DA	5745-1¼ 390 (400-1¼)			

AUTHORIZATION REQUIRED