

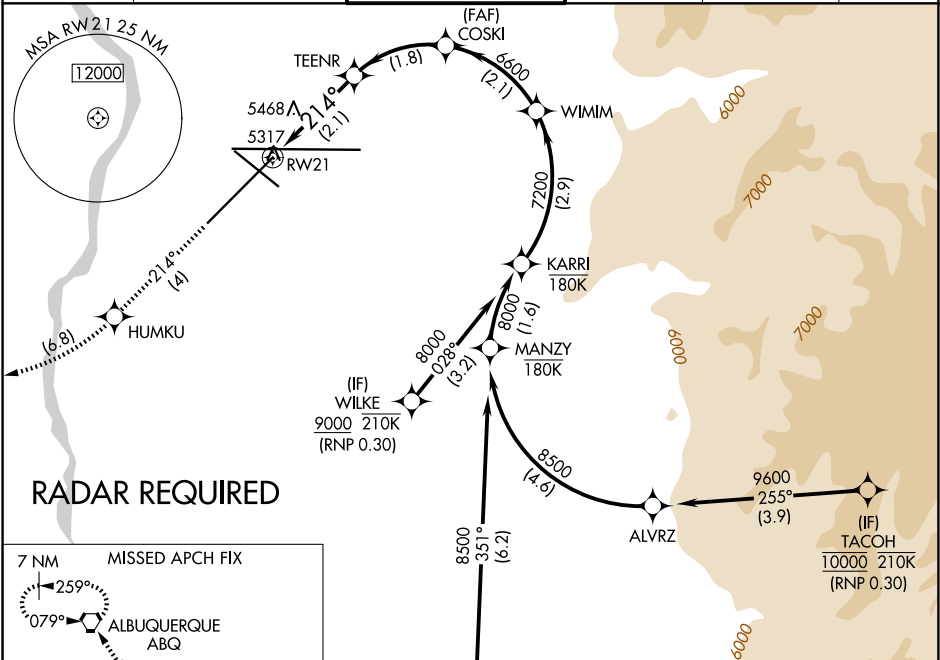
APP CRS	Rwy Ldg	10000
214°	TDZE	5316
	Apt Elev	5355

RNAV (RNP) Z RWY 21

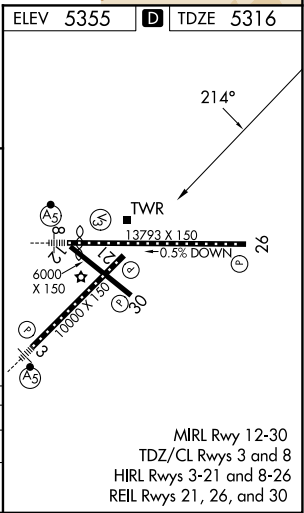
ALBUQUERQUE INTL SUNPORT (ABQ)

ASR	For uncompensated Baro-VNAV systems, procedure NA below -12°C (11°F) or above 47°C (116°F). RF required. GPS required.	MISSED APPROACH: Climb to 8000 on track 214° to HUMKU, right turn to WAPMA, then on track 315° to ABQ VORTAC and hold.
-----	---	--

D-ATIS	ALBUQUERQUE APP CON	ALBUQUERQUE TOWER	GND CON	CLNC DEL	CPDLC
118.0 257.7	123.9 354.1	120.3 351.9	121.9 348.6	119.2 259.3	



								See planview for multiple IF locations.			
tr 214°				tr 315°				KARRI			
VGSI and RNAV glidepath not coincident (VGSI Angle 3.00/TCH 74).											
				TEENR		COSKI		WIMIM		8000	
6030				6600		6600		7200			
2.1 NM				1.8 NM		2.1 NM		2.9 NM		GP 3.00° TCH 55	
CATEGORY		A		B		C		D			
RNP 0.30 DA		5755-1½ 439 (400-1½)									
AUTHORIZATION REQUIRED											



SW-1, 07 AUG 2025 to 04 SEP 2025

SW-1, 07 AUG 2025 to 04 SEP 2025