

APP CRS  
**259°**

Rwy Ldg  
TDZE  
**5355**

Apt Elev  
**5355**

**RNAV (RNP) Y RWY 26**  
ALBUQUERQUE INTL SUNPORT (ABQ)

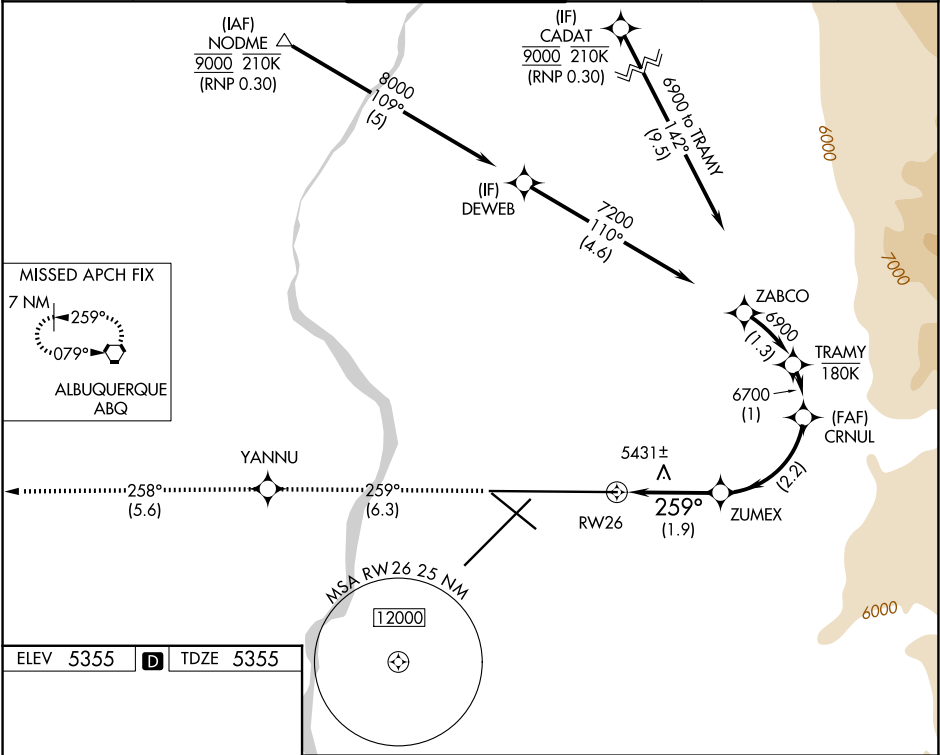
RNP AR APCH, RF required.

▼

For uncompensated Baro-VNAV systems, procedure NA below -12°C or above 48°C.

MISSED APPROACH: Climb to 8000 on track 259° to YANNU and on track 258° to ABQ VORTAC and hold.

D-ATIS	ALBUQUERQUE APP CON	ALBUQUERQUE TOWER	GND CON	CLNC DEL	CPDLC
118.0 257.7	123.9 354.1	120.3 351.9	121.9 348.6	119.2 259.3	



ELEV 5355

**D**

TDZE 5355

8000

↑

YANNU

tr 259°

tr 258°

ABQ

VGSI and RNAV glidepath not coincident (VGSI Angle 3.00°/TCH 83).

CRNUL

6700

See planview for multiple IF locations.

RW26

5997

ZUMEX

6700

GP 3.00°

TCH 50

CATEGORY	A	B	C	D
RNP 0.15 DA	5728-1¼ 373 (400-1¼)			

**AUTHORIZATION REQUIRED**

MIRL Rwy 12-30

TDZ/CL Rwy 3 and 8

HIRL Rwy 3-21 and 8-26

REIL Rwy 21, 26, and 30