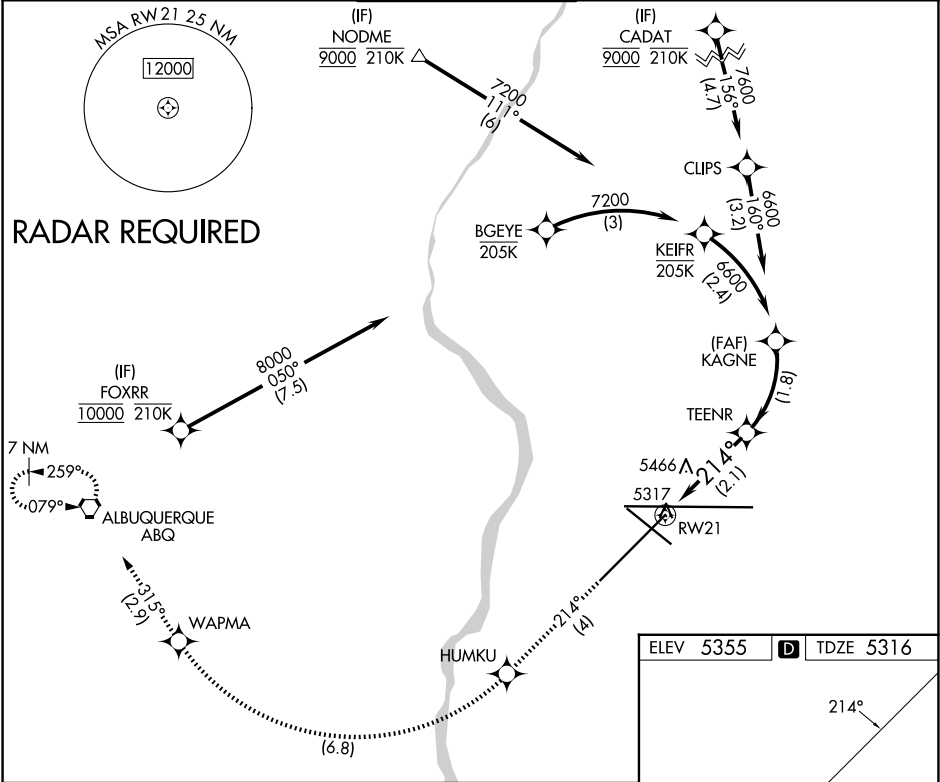







APP CRS	Rwy Ldg	10000
214°	TDZE	5316
	Apt Elev	5355

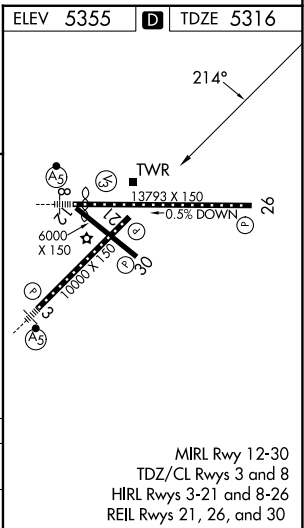
RNAV (RNP) Y RWY 21
ALBUQUERQUE INTL SUNPORT (ABQ)

ASR	For uncompensated Baro-VNAV systems, procedure NA below -12°C (11°F) or above 47°C (116°F). RF Required. GPS Required.	MISSED APPROACH: Climb to 8000 on track 214° to HUMKU, right turn to WAPMA, then on track 315° to ABQ VORTAC and hold.
-----	---	--

D-ATIS	ALBUQUERQUE APP CON	ALBUQUERQUE TOWER	GND CON	CLNC DEL	CPDLC
118.0 257.7	123.9 354.1	120.3 351.9	121.9 348.6	119.2 259.3	



8000 ↑ tr 214°	HUMKU 	WAPMA 	tr 315° 	ABQ	KAGNE 6600
See planview for multiple IF locations.			TEENR 6030	6600	
RW21 			214° 		GP 3.00° TCH 55
2.1 NM			1.8 NM		
CATEGORY	A	B	C	D	
RNP 0.30 DA	5758-1½			442 (500-1½)	
AUTHORIZATION REQUIRED					



SW-1, 07 AUG 2025 to 04 SEP 2025

SW-1, 07 AUG 2025 to 04 SEP 2025