

|         |       |         |          |       |
|---------|-------|---------|----------|-------|
| LOC/DME | I-SPT | APP CRS | Rwy Ldg  | 12793 |
| 111.9   |       | 079°    | TDZE     | 5320  |
| Chan 56 |       |         | Apt Elev | 5355  |

ILS or LOC RWY 8  
ALBUQUERQUE INTL SUNPORT (ABQ)

DME required. RNAV 1 - GPS or RADAR required for procedure entry.

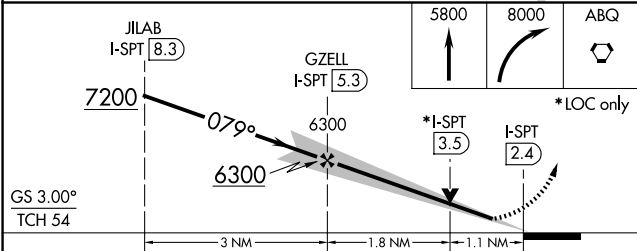
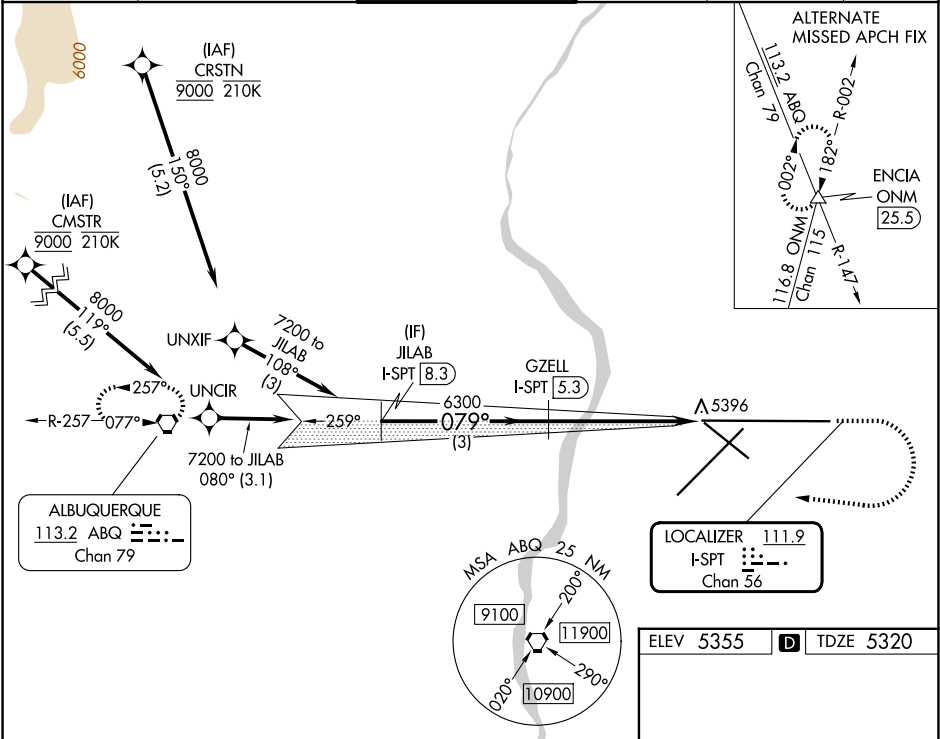
For inop ALS, increase S-LOC 8 Cat C and D visibility to RVR 6000.

ASR

MALSR

MISSED APPROACH: Climb to 5800 then climbing right turn to 8000 direct ABQ VORTAC and hold.

|             |                     |                   |             |             |       |
|-------------|---------------------|-------------------|-------------|-------------|-------|
| D-ATIS      | ALBUQUERQUE APP CON | ALBUQUERQUE TOWER | GND CON     | CLNC DEL    | CPDLC |
| 118.0 257.7 | 123.9 354.1         | 120.3 351.9       | 121.9 348.6 | 119.2 259.3 |       |



| CATEGORY | A                     | B                     | C                       | D           |
|----------|-----------------------|-----------------------|-------------------------|-------------|
| S-ILS 8  | 5527/18 207 (200-½)   |                       |                         |             |
| S-LOC 8  | 5720/24               | 400 (400-½)           | 5720/40                 | 400 (400-¾) |
| CIRCLING | 5840-1<br>485 (500-1) | 5920-1<br>565 (600-1) | 5940-1½<br>585 (600-1½) | NA          |

ELEV 5355 TDZE 5320

TWR 13793 X 150, 0.5% DOWN, 10000 X 150

MIRL Rwy 12-30  
TDZ/CL Rwy 3 and 8  
HIRL Rwy 3-21 and 8-26  
REIL Rwy 21, 26, and 30

FAF to MAP 2.9 NM

|         |      |      |      |      |      |
|---------|------|------|------|------|------|
| Knots   | 60   | 90   | 120  | 150  | 180  |
| Min:Sec | 2:54 | 1:56 | 1:27 | 1:10 | 0:58 |

SW-1, 07 AUG 2025 to 04 SEP 2025

SW-1, 07 AUG 2025 to 04 SEP 2025