

ALBUQUERQUE, NEW MEXICO


# HI-TACAN RWY 8

VORTAC ABQ <b>113.2</b> Chan <b>79</b>	APCH CRS <b>077°</b>	Rwy Idg <b>12,793</b> TDZE <b>5320</b> Arpt Elev <b>5355</b>
--	-------------------------	--

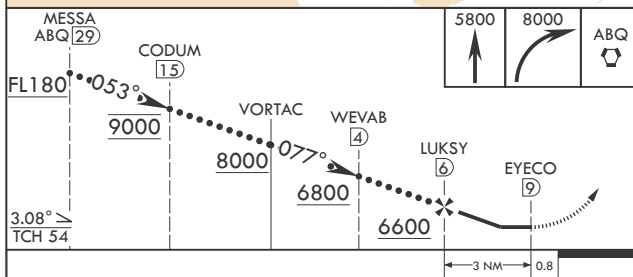
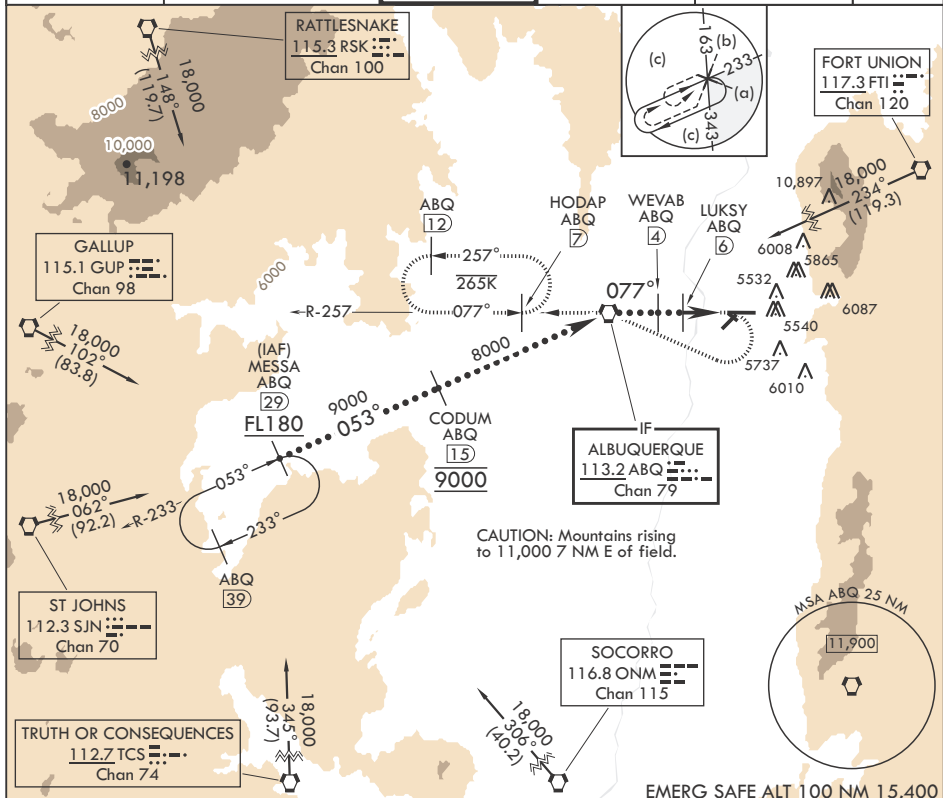
- (USAF)


ALBUQUERQUE INTL SUNPORT (KIRTLAND AFB) (KABQ)

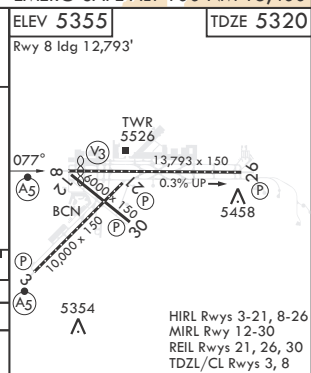
**T** \* When ALS inop, increase CAT CDE RVR to 55, vis to 1 1/8 miles.  
 \*\* Circling NA for CAT E SE of Rwy 3-21 and NE of Rwy 12-30.  
 When local altimeter is not received, procedure NA.

**MALSR**  **MISSED APPROACH:** Climb to 5800 then climbing right turn to 8000 direct ABQ  
VORTAC R-257 to HODAP/ABQ 7 DME and hold.

D-ATIS 118.0 257.7	APP CON/DEP CON 123.9 253.5	TOWER 120.3 351.9	GND CON 121.9 348.6	CLNC DEL 119.2 259.3	ASR
-----------------------	--------------------------------	----------------------	------------------------	-------------------------	-----



CATEGORY	C	D	E
S-8*	5700/35	380	(400- $\frac{5}{8}$ )
 CIRCLING**	5920-1 $\frac{1}{2}$ 565 (600-1 $\frac{1}{2}$ )	6460-3	1105 (1200-3)



ALBUQUERQUE, NEW MEXICO

35°02'N - 106°36'W

ALBUQUERQUE INTL SUNPORT (KIRTLAND AFB) (KABQ)

Amdt 2A 29MAR18

# HI-TACAN RWY 8

SW-1, 07 AUG 2025 to 04 SEP 2025

SW-1, 07 AUG 2025 to 04 SEP 2025